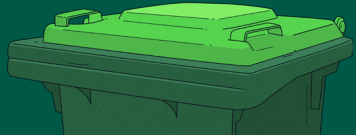




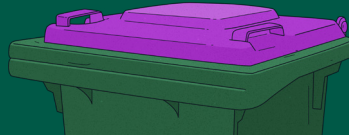
Kerbside Collection Guide



Organics



Recycling

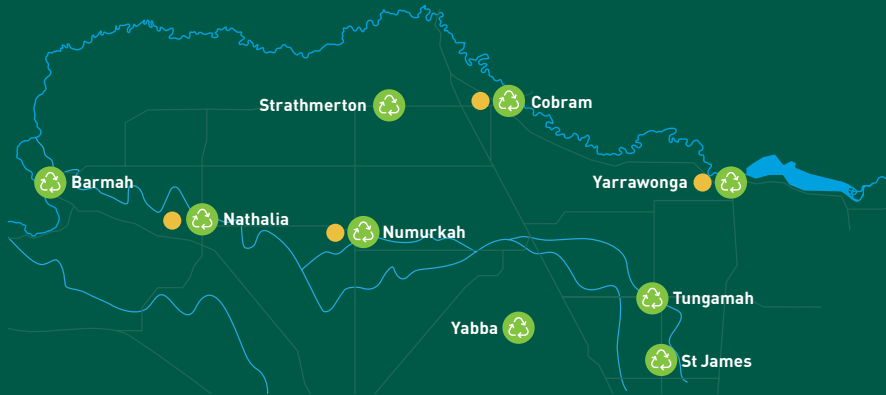


Glass



Landfill

Moira ways to recycle



Resource Recovery Centres

Barmah
Cobram
Nathalia
Numurkah
St James
Strathmerton
Tungamah
Yabba
Yarrawonga

Mobile Recycling Stations

Barmah Heritage Centre, Nathalia
Cobram Service Centre
Cobram Library
Numurkah Learning Centre
Yarrawonga Service Centre

The need to reduce what goes into our landfill bins is important for our future.

Moira Shire is determined to help you by offering more ways to recycle household items which are not accepted in your kerbside recycling bin.



Scan QR for the full list of waste we accept

Our mobile recycling stations are located at our Cobram and Yarrawonga Service Centres, Cobram Library, Numurkah Learning Centre and Barmah Heritage Centre in Nathalia. They accept:

- Household batteries including cordless power tool batteries
- Small electronic waste including phones, tablets and cameras
- CDs, DVDs, video and cassettes
- Toothbrushes and toothpaste tubes
- Pens, markers and mechanical pencils

Our Resource Recovery Centres also offer more ways to recycle:

- Clothing and textiles*
- Soft plastics*
- Printer cartridges
- Polystyrene
- Electronic waste*
- Scrap metal
- Garden waste

* Cobram, Yarrawonga, Numurkah, and Nathalia Resource Recovery Centres only



✓ YES

- ✓ Food scraps, including dairy and citrus
- ✓ Bones and meat
- ✓ Prawn shells and fish scales
- ✓ Soiled paper towel and tissues
- ✓ Grass clippings, weeds, leaves
- ✓ Flowers
- ✓ Small non-treated timber off cuts
- ✓ Prunings and small branches
<10cm diameter
- ✓ Animal droppings (including dog)

✗ NO

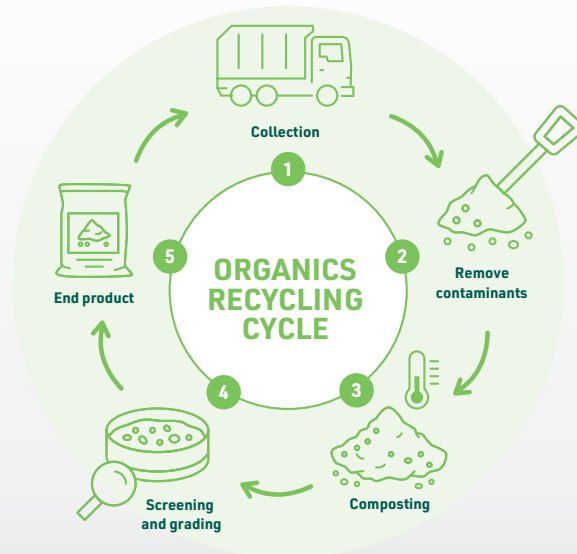
- ✗ Plastics, including fruit stickers
- ✗ Stones, rocks and rubble
- ✗ Soil and sand
- ✗ Treated or painted timber
- ✗ Large logs or stumps
- ✗ Non-compostable household waste
- ✗ Garden tools and hoses

Organics

Your green lid bin is for food and garden waste, which makes up a large portion of household waste.

Please use your kitchen caddy to collect household food waste.

Your organic materials, once collected, are taken to a local commercial composting facility where it is turned into compost and mulch. This valuable product is used to improve the health of our soils in primary production and our parks and gardens.





✓ YES

- ✓ Plastic bottles; butter, milk, yoghurt and ice cream containers
- ✓ Aluminium and steel cans, foil and containers (cleaned)
- ✓ Paper and cardboard
- ✓ Magazines and newspapers
- ✓ Metal and plastic bottle tops/lids
- ✓ UHT milk, plant based milk and fruit juice cartons

✗ NO

- ✗ Soft plastics and cling film *
- ✗ Glass bottles and jars *
- ✗ Polystyrene foam *
- ✗ Waxed cardboards
- ✗ Garden waste or tools
- ✗ Food scraps *
- ✗ Nappies
- ✗ Fabric or clothing *
- ✗ Scrap metal and gas bottles *
- ✗ Crockery, glassware and window glass

* These items can be taken to most Moira Shire Resource Recovery Centres for recycling

Recycling

Your yellow lid bin is for materials such as paper, cardboard, aluminium/steel cans and rigid plastic.

Your recycling items, once collected, are taken to a Material Recovery Facility where they are sorted into groups (paper, plastic, cardboard, etc) and reused to produce new products.

By recycling, we are reducing the amount of waste that goes into landfill and conserving natural resources.



Remember the Container Deposit Scheme to get 10 cents on all eligible containers





✓ YES

- ✓ Soft drink, juice, water and milk bottles
- ✓ Beer, wine and spirit bottles
- ✓ Sauce, condiments and oil bottles and jars
- ✓ Medicine bottles
- ✓ Vitamin and supplement bottles and jars
- ✓ Bottles and jars from toiletry and cosmetic items

X NO

- X Loose lids and caps from bottles and jars
- X Corks, pumps, sprays and droppers
- X Bottles and jars with non-glass items inside such as cigarette butts, food or liquids
- X Glass kitchenware, such as glasses, crockery and ceramics, storage containers and cookware.
- X Glass household items, such as vases, mirrors, light bulbs and fluorescent tubes
- X Plastic bags or plastic packaging *

* These items can be taken to most Moira Shire Resource Recovery Centres for recycling

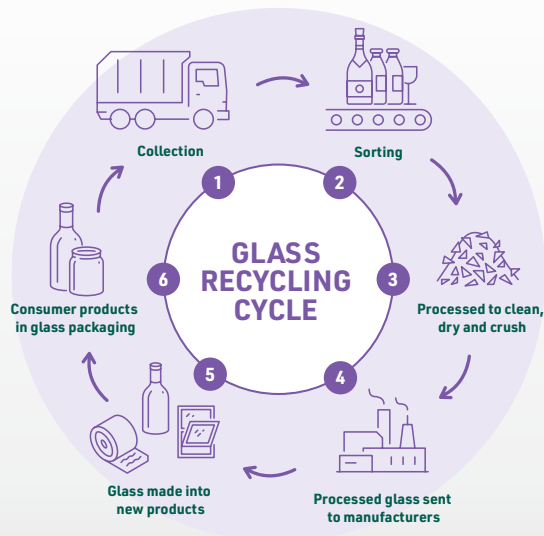
Glass

Your purple lid bin is for all glass bottles and jars.

By separating glass from our mixed recycling, we are creating a cleaner recycling system, ensuring all glass is recycled and keeping valuable materials out of landfill.



Remember the Container Deposit Scheme to get 10 cents on all eligible containers





✓ YES

- ✓ Disposable nappies
- ✓ Kitty litter (wrapped in newspaper)
- ✓ Rope, hoses or strapping
- ✓ Broken crockery or glassware (wrapped in newspaper)
- ✓ Waxed cardboard boxes
- ✓ Take-away coffee cups
- ✓ Foam; such as meat trays and cups
- ✓ Soft plastics *

✗ NO

- ✗ Timber
- ✗ Bricks/rubble
- ✗ Electronic waste (anything with a cord, plug or battery) *
- ✗ Soil
- ✗ Batteries *
- ✗ Paint
- ✗ Chemicals and poisons
- ✗ Hot ash
- ✗ Hazardous and medical waste

* These items can be taken to most Moira Shire Resource Recovery Centres for recycling

Landfill

Your red lid bin is for all household waste that can not be reused, repurposed, recycled or composted.

This waste is collected and taken to our landfill site in Cobram.

- Avoid waste in the first place by using reusable items such as bags, water bottles, coffee cups and containers.
- Repair and maintain household items.

- Reduce what you throw away by planning ahead and only buy what you need.
- Borrow or hire if you only need an item for a short term.
- Find new uses for everyday items, purchase items in reusable containers, use up leftover food by transforming into another nutritious meal.



Printed on 100% recycled paper

Use the QR Code or visit **moira.vic.gov.au**

to download our Moira Waste Info App for a full A-Z guide on waste disposal, get reminders about bin night and to view, download or print your kerbside collection calendar.

