

Goulburn-Murray Water Connections Project – Incorporated Document

August 2015

1 Introduction

This document is an incorporated document in the Campaspe, Gannawarra, Greater Bendigo, Greater Shepparton, Loddon, Moira and Swan Hill Planning Schemes under section 6(2)(j) of the *Planning and Environment Act 1987*.

The land identified in this document may be used and developed in accordance with the specific control in the document.

2 Purpose

The purpose of the specific control is to allow the use and development of land for the purpose of irrigation modernisation works to be undertaken by or on behalf of the Goulburn-Murray Rural Water Corporation (**Goulburn-Murray Water**).

3 The Project

This document applies to the use and development of land undertaken by or on behalf of Goulburn-Murray Water for the purposes of the Goulburn-Murray Water Connections Project (**the Project**), which is the irrigation infrastructure modernisation project for the Goulburn-Murray Irrigation District. Under the Project, the Victorian Government, in conjunction with the Commonwealth and local irrigators, is investing \$2 billion to upgrade northern Victoria's irrigation infrastructure. The upgrade will improve water delivery management and irrigation services, and recover much of the water now being lost through leaks, evaporation and system inefficiencies.

The goal of the Project is to save 225 gegalitres (GL) of water over Stage 1 of the implementation of the Project and 204GL of water in Stage 2, by reducing water losses in the irrigation delivery system through renewal, rationalisation, and decommissioning of irrigation infrastructure.

The Project includes, but is not limited to, the following components to be undertaken by or on behalf of the Goulburn-Murray Water for both capital, on farm and associated works:

- Automation of regulators on major ('backbone') irrigation channels.
- Replacement, upgrading or removal of meters.
- Remediation and lining of backbone channels to reduce leakage and seepage.
- Decommissioning of channels.
- New pump stations, pipelines or channels.
- Replacement or upgrading of regulators or regulator gates.
- Reconfiguration of landowner connections by pipeline or channel to the public backbone and associated on farm works.

- Construction of access works to site for construction and maintenance.
- Any use and development ancillary to the above.

The Project does not include the river connections component.

4 Land

The specific control in this document applies to the following land:

- a) The Central Goulburn, Loddon Valley, Murray Valley, Rochester-Campaspe, Shepparton and Torrumbarry Irrigation Areas, which are located within the Goulburn-Murray Irrigation District, a prescribed district declared under Part 6A of the *Water Act 1989*; and
- b) The Waranga Western Channel, Pyramid No. 1 Channel, Boort No. 2 Channel, Boort No. 3 Channel, Boort No. 5 Channel, Boort No. 1/5 Channel, Boort No. 8/2 Channel, Boort No. 1/12 Channel, East Goulburn Main Channel and Yarrawonga Main Channel and land adjoining those channels that is either owned by Goulburn-Murray Water, is subject to an irrigation easement or is public or freehold land required for the purposes for the Project.

The land in paragraph (a) is shown on the eight (8) drawings entitled “*Goulburn-Murray Water – Connections Project, Works Program*” which are attached to and form part of this document. Additionally, the land in paragraph (b) is shown indicatively on the drawing entitled “*Goulburn-Murray Water – Connections Project, Works Program*” which is attached to and forms part of this document.

The land specified in this clause is referred to as the “Project Area” in this document.

5 Control

The specific control in the document prevails over any inconsistent provision in the Campaspe, Gannawarra, Greater Bendigo, Greater Shepparton, Loddon, Moira and Swan Hill Planning Schemes.

Works undertaken by Goulburn-Murray Water and their contractors on behalf of private landowners, as part of the Project, are subject to these controls.

However, the control does not apply to connection works and on-farm works undertaken by private landowners, or their agents or contractors, whether or not undertaken by agreement with Goulburn-Murray Water or the former State Owned Enterprise for Irrigation Modernisation in Northern Victoria.

Subject to that limitation, no permit is required to undertake the following use or development of land within the Project Area to implement the Project:

- Use and develop land for a Utility installation including a Minor utility installation.
- Activities ancillary to the use and development of land for the purposes of a Utility installation and Minor utility installation, including but not limited to the creation of access roads, radio communication towers, provision for car parking, erection of temporary structures and materials storage.
- Remove, destroy, prune or lop native and non-native vegetation.
- Erect fencing.
- Demolish structures.
- Undertake earthworks to create access roads, bunds, borrow pits, mounds, wetlands and otherwise to excavate land, salvage artefacts and alter drainage.
- Create or alter access to a road in a Road Zone – Category 1.

The control is subject to the conditions in clauses 6.1 to 6.4 of this document.

6 Conditions

6.1 Environmental Management

Environmental Management Framework

Before any native vegetation is removed or any works on a natural waterway or wetland are constructed or carried out, an environmental management framework to the satisfaction of the Minister for Planning, having regard to written advice from the Minister for Environment, Climate Change and Water, must be submitted to and approved by the Minister for Planning.

The approved environmental management framework may be amended to the satisfaction of the Minister for Planning.

The environmental management framework must include, but is not limited to:

- A statement of environmental commitments or performance requirements in relation to proposed physical works.
- Processes and methodologies for assessing potential impacts on native vegetation as well as flora and fauna species listed under the *Flora and Fauna Guarantee Act 1988* (FFG) due to the implementation of the Project.
- A framework for managing impacts and assigning accountabilities for impacts on biodiversity, cultural heritage and potential acid sulphate soils, as well as drainage and flooding patterns, including but not limited to:

- Preparation and implementation of management strategies or plans for mitigation and offsetting of impacts on native vegetation;
- Preparation and implementation of management strategies or plans for flora and fauna species listed under the FFG Act;
- Preparation and implementation of management strategies or plans for cultural heritage;
- Monitoring, reporting and auditing of relevant activities and environmental outcomes, including the role of an independent auditor to be appointed by Goulburn-Murray Water (appointee to be agreed with the Secretary to the Department of Environment, Land, Water and Planning); and
- Mechanisms to ensure compliance by Goulburn-Murray Water and its contractors with these requirements for all construction activities within this Project.

Environmental Management Plan

Before any native vegetation is removed or any works on a natural waterway or wetland are constructed or carried out, an environmental management plan to the satisfaction of the Secretary to the Department of Environment, Land, Water and Planning must be submitted to and approved by the Secretary to the Department of Environment, Land, Water and Planning (as constituted under Part 2 of the *Conservation, Forests and Lands Act 1987*).

An approved environmental management plan may be amended to the satisfaction of the Secretary to the Department of Environment, Land, Water and Planning.

The environmental management plan must be in accordance with the approved environmental management framework.

The environmental management plan must include compliance with the relevant Victorian native vegetation clearing and offsetting policy.

Implementation

The environmental management framework must be implemented to the satisfaction of the Minister for Planning and the environmental management plan must be implemented to the satisfaction of the Secretary to the Department of Environment, Land, Water and Planning (as constituted under Part 2 of the *Conservation, Forests and Lands Act 1987*).

6.2 Catchment Management Authority Consent

The written consent of the relevant catchment management authority must be obtained prior to the commencement of any new use, buildings and works (including decommissioning) within the following zones and overlays:

- Urban Floodway Zone;
- Floodway Overlay; and
- Land Subject to Inundation Overlay.

6.3 Heritage Consent

Where any building or place within the Project Area is identified in a Schedule to the Heritage Overlay in the planning scheme, the prior written consent of the responsible authority is required prior to any action which would have required a permit. The responsible authority will have regard to the nature of the protection afforded to that place.

Any request for the written consent of the responsible authority under this provision must be accompanied by a report by a suitably qualified heritage adviser.

6.4 Compatibility with public purpose

The written consent of the public land manager or an acquiring authority must be obtained prior to the commencement of any new use or buildings and works, or any removal, destruction or lopping of vegetation within a public land zone or a Public Acquisition Overlay which, but for this control, would have required a permit.

7 Provision of documents

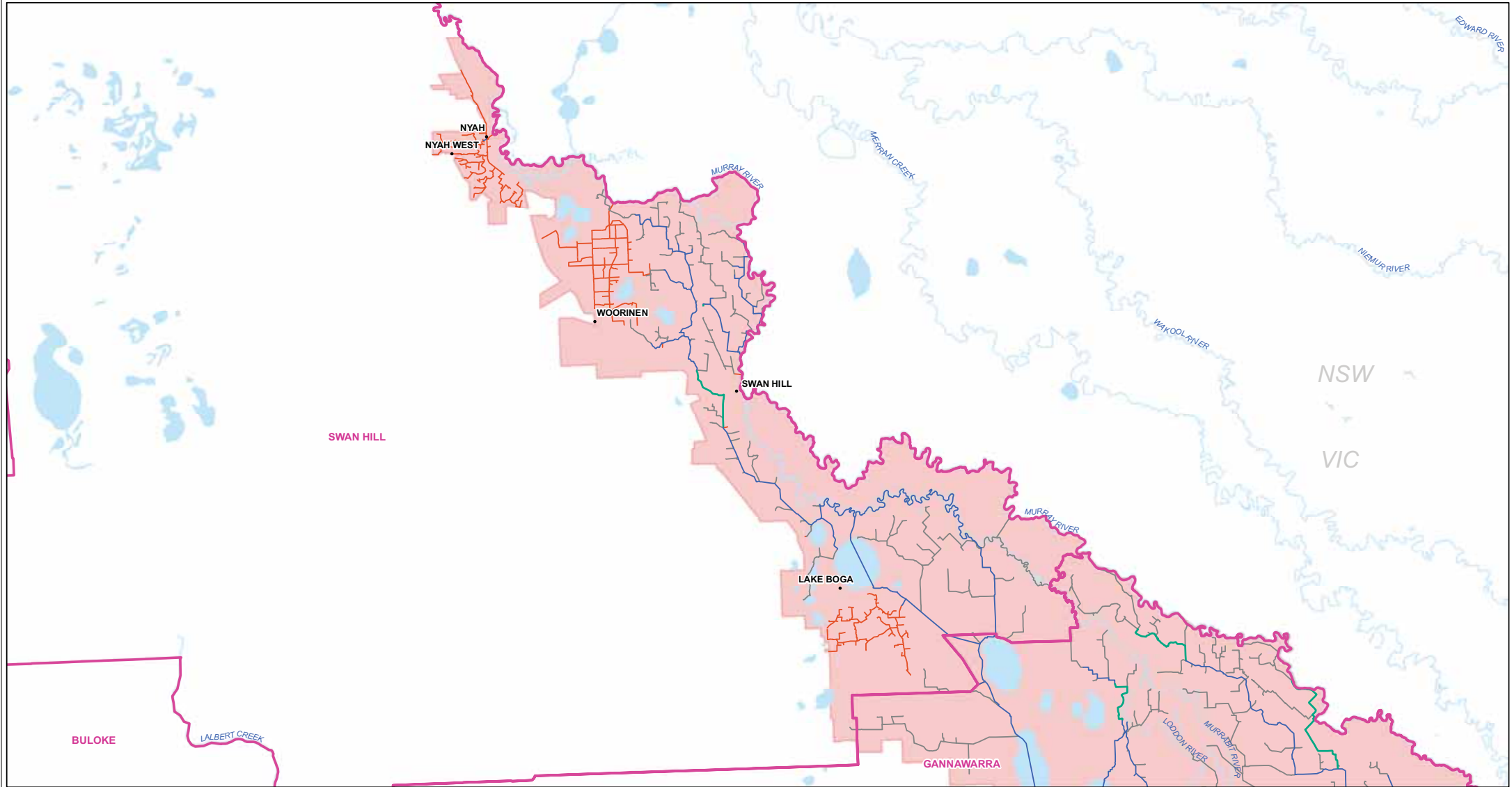
A copy of the environmental management framework must be provided for information to each responsible authority for the planning schemes into which this document is incorporated.

A copy of an approved environmental management plan must be given for information to each responsible authority for the planning schemes into which this document is incorporated if the plan relates to the area affected by that planning scheme.

An ongoing provision of a programme of works must be submitted to each responsible authority for the planning schemes into which this document is incorporated.

8 Expiry

This control expires on 30 June 2020.



Legend

Backbone Channels

- Backbone
- Backbone Subject to Further Investigation
- GMW Remaining Channel
- Current GMW Pipeline
- Watercourse Lines

Irrigation Areas

- Central Goulburn
- Murray Valley
- Loddon Valley
- Rochester
- Shepparton
- Torrumbarry

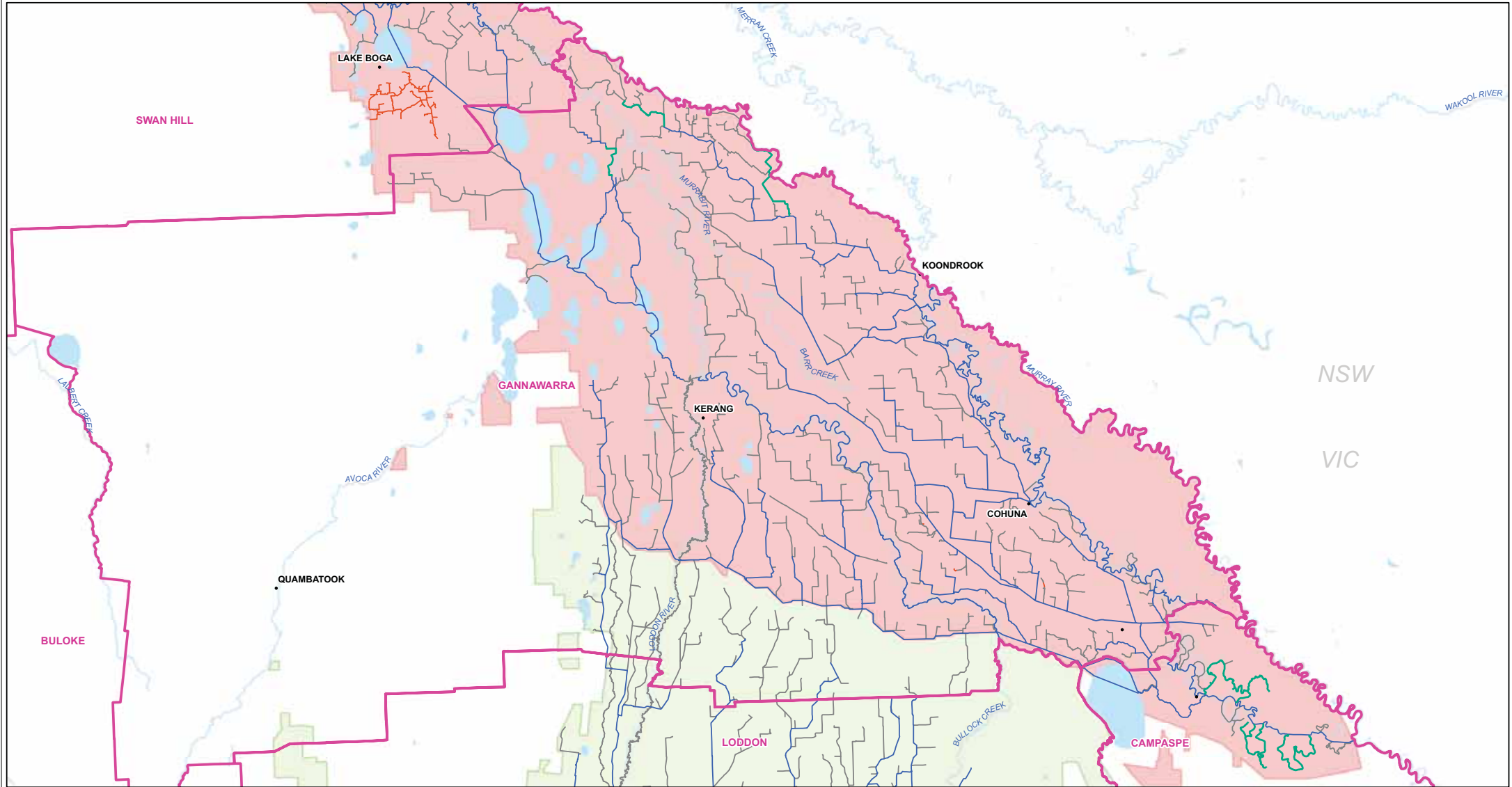
- Local Government Area
- Waterbodies

IS074800
[GDA 94 | MGA Zone 55]
1:256,000 @ A3



DATA SOURCES
 [© Commonwealth of Australia (Geoscience Australia) 2006
 Geodata Topo 250k Series 3; Vicmap Data © State of Victoria
 2014; Goulburn-Murray Water 2015]

COPYRIGHT: The concepts and information contained in this document are the copyright of Jacobs. Use or copying of the document in whole or in part without the written permission of Jacobs constitutes an infringement of copyright. Jacobs does not warrant that this document is definitive nor free of error and does not accept liability for any loss caused or arising from reliance upon information provided herein.



Legend

Backbone Channels

- Backbone
- Backbone Subject to Further Investigation
- GMW Remaining Channel
- Current GMW Pipeline
- Watercourse Lines

Irrigation Areas

- Central Goulburn
- Murray Valley
- Loddon Valley
- Rochester
- Shepparton
- Torrumbarry

- Local Government Area
- Waterbodies



0 5 10
Kilometres

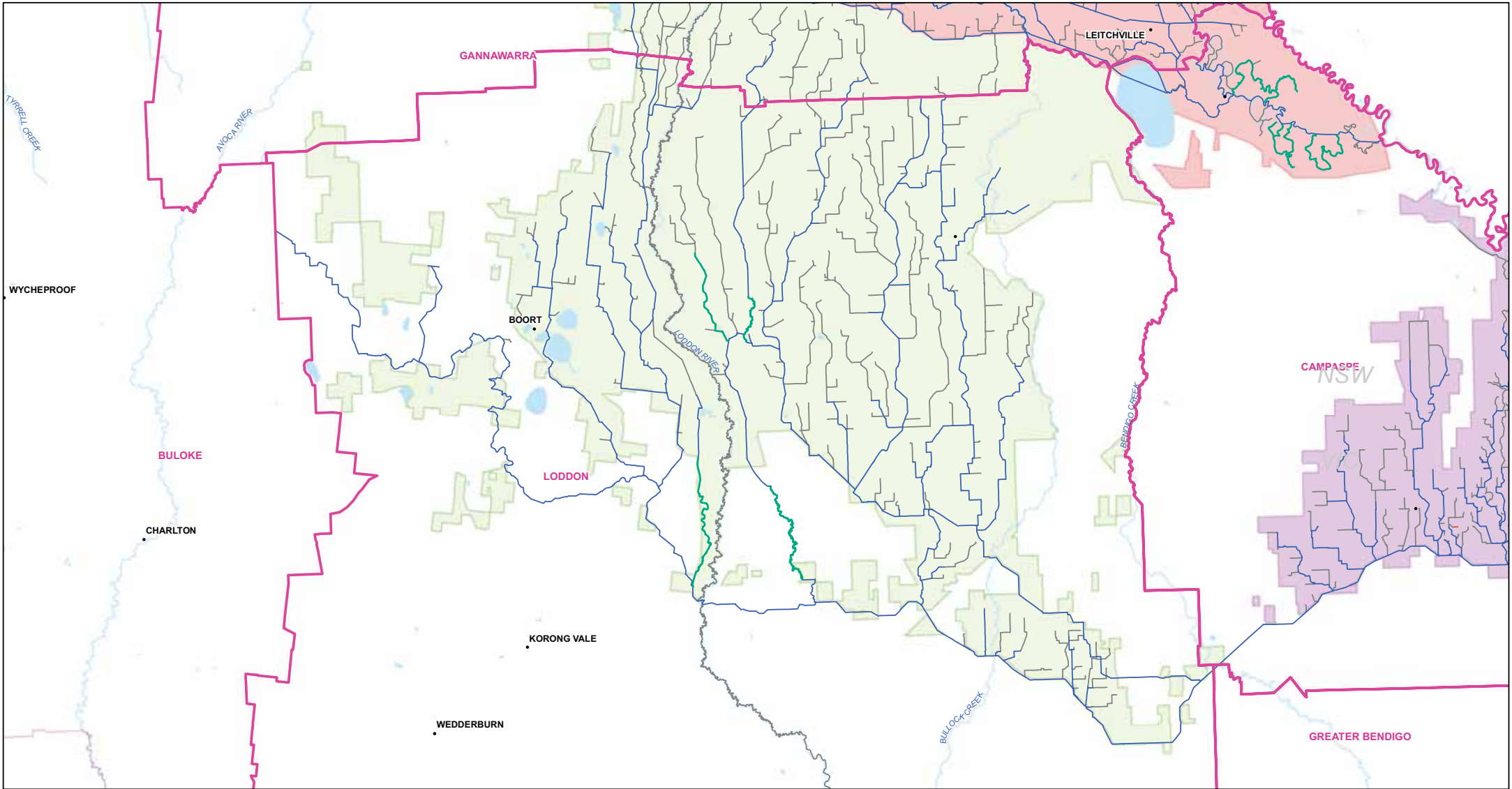
IS074800
[GDA 94 | MGA Zone 55]
1:311,000 @ A3



DATA SOURCES

[© Commonwealth of Australia (Geoscience Australia) 2006
Geodata Topo 250k Series 3; Vicmap Data © State of Victoria
2014; Goulburn-Murray Water 2015]

COPYRIGHT: The concepts and information contained in this document are the copyright of Jacobs. Use or copying of the document in whole or in part without the written permission of Jacobs constitutes an infringement of copyright. Jacobs does not warrant that this document is definitive nor free of error and does not accept liability for any loss caused or arising from reliance upon information provided herein.



Legend

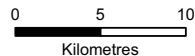
Backbone Channels

- Backbone
- Backbone Subject to Further Investigation
- GMW Remaining Channel
- Current GMW Pipeline
- Watercourse Lines

Irrigation Areas

- Central Goulburn
- Murray Valley
- Loddon Valley
- Rochester
- Shepparton
- Torrumbarry

- Local Government Area
- Waterbodies



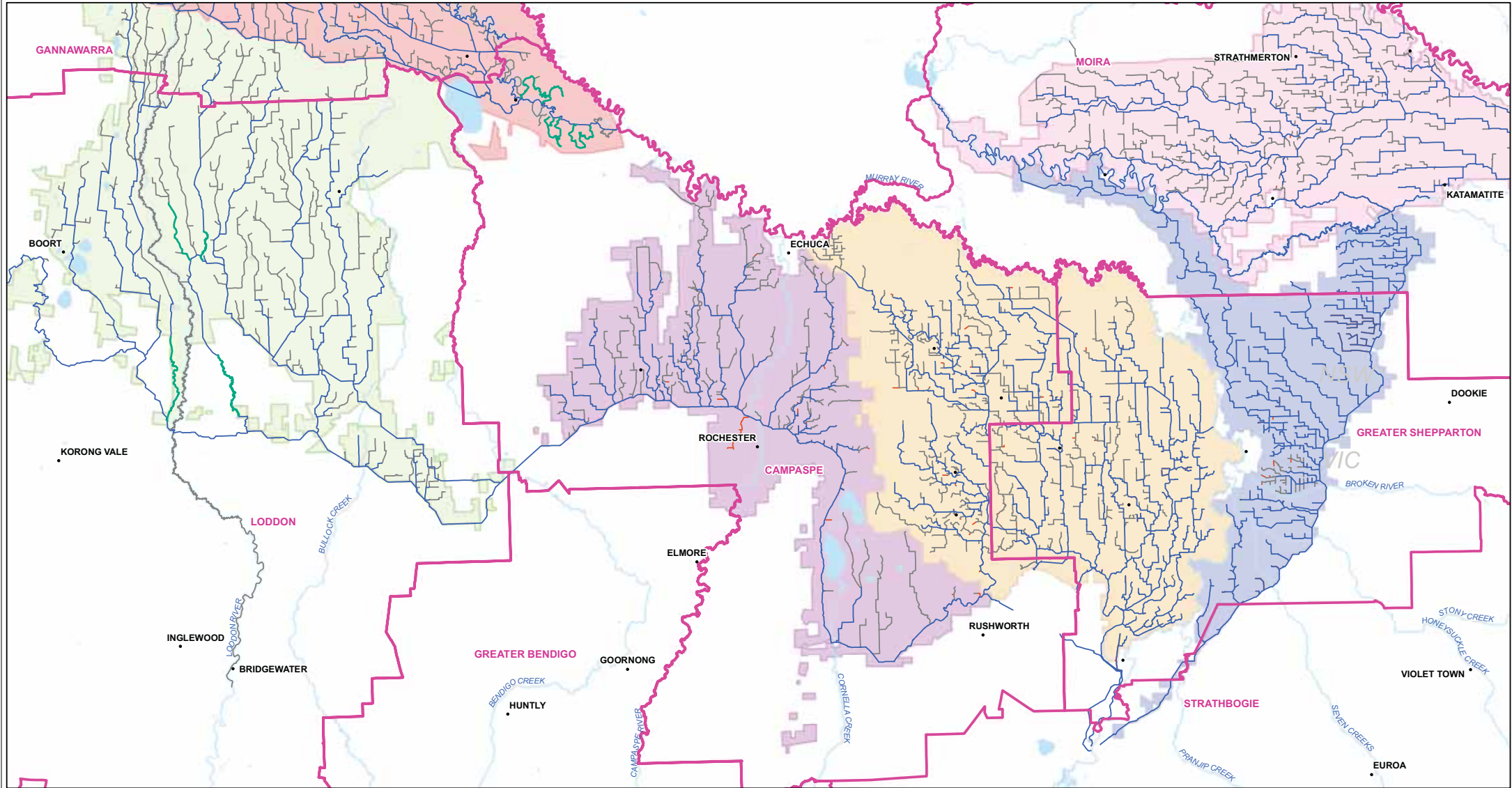
IS074800
[GDA 94 | MGA Zone 55]
1:313,000 @ A3



DATA SOURCES

[© Commonwealth of Australia (Geoscience Australia) 2006
Geodata Topo 250k Series 3; Vicmap Data © State of Victoria
2014; Goulburn-Murray Water 2015]

COPYRIGHT: The concepts and information contained in this document are the copyright of Jacobs. Use or copying of the document in whole or in part without the written permission of Jacobs constitutes an infringement of copyright. Jacobs does not warrant that this document is definitive nor free of error and does not accept liability for any loss caused or arising from reliance upon information provided herein.



Legend

Backbone Channels

- Backbone
- Backbone Subject to Further Investigation
- GMW Remaining Channel
- Current GMW Pipeline
- Watercourse Lines

Irrigation Areas

- Central Goulburn
- Murray Valley
- Loddon Valley
- Rochester
- Shepparton
- Torrumbarry

- Local Government Area
- Waterbodies



0 12.5 25
Kilometres

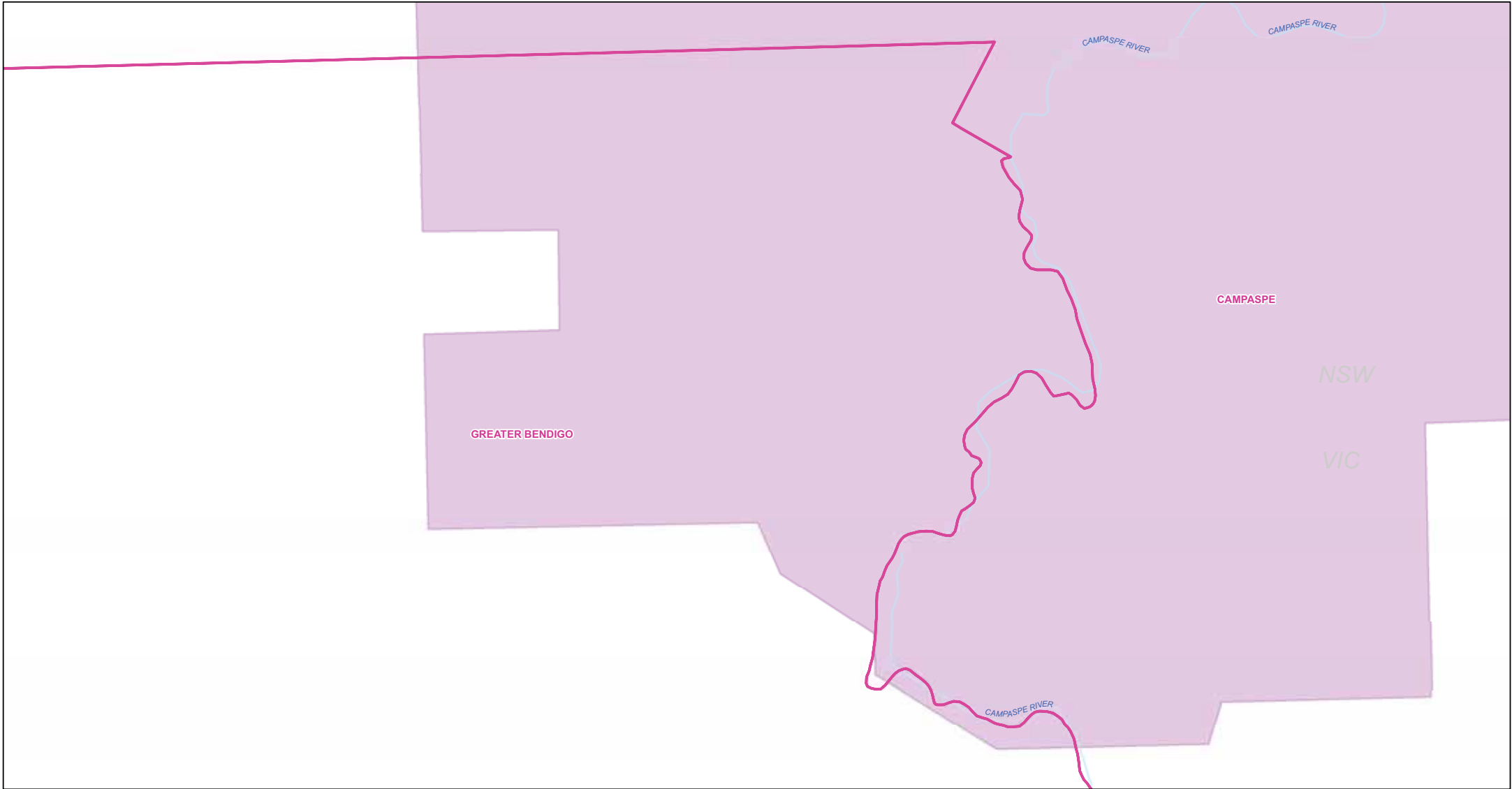
IS074800
[GDA 94 | MGA Zone 55]
1:477,000 @ A3



DATA SOURCES

[© Commonwealth of Australia (Geoscience Australia) 2006
Geodata Topo 250k Series 3; Vicmap Data © State of Victoria
2014; Goulburn-Murray Water 2015]

COPYRIGHT: The concepts and information contained in this document are the copyright of Jacobs. Use or copying of the document in whole or in part without the written permission of Jacobs constitutes an infringement of copyright. Jacobs does not warrant that this document is definitive nor free of error and does not accept liability for any loss caused or arising from reliance upon information provided herein.



Legend

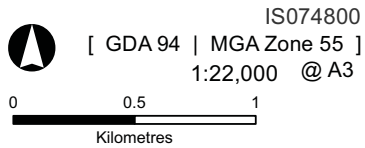
Backbone Channels

- Backbone
- Backbone Subject to Further Investigation
- GMW Remaining Channel
- Current GMW Pipeline
- Watercourse Lines

Irrigation Areas

- Central Goulburn
- Murray Valley
- Loddon Valley
- Rochester
- Shepparton
- Torrumbarry

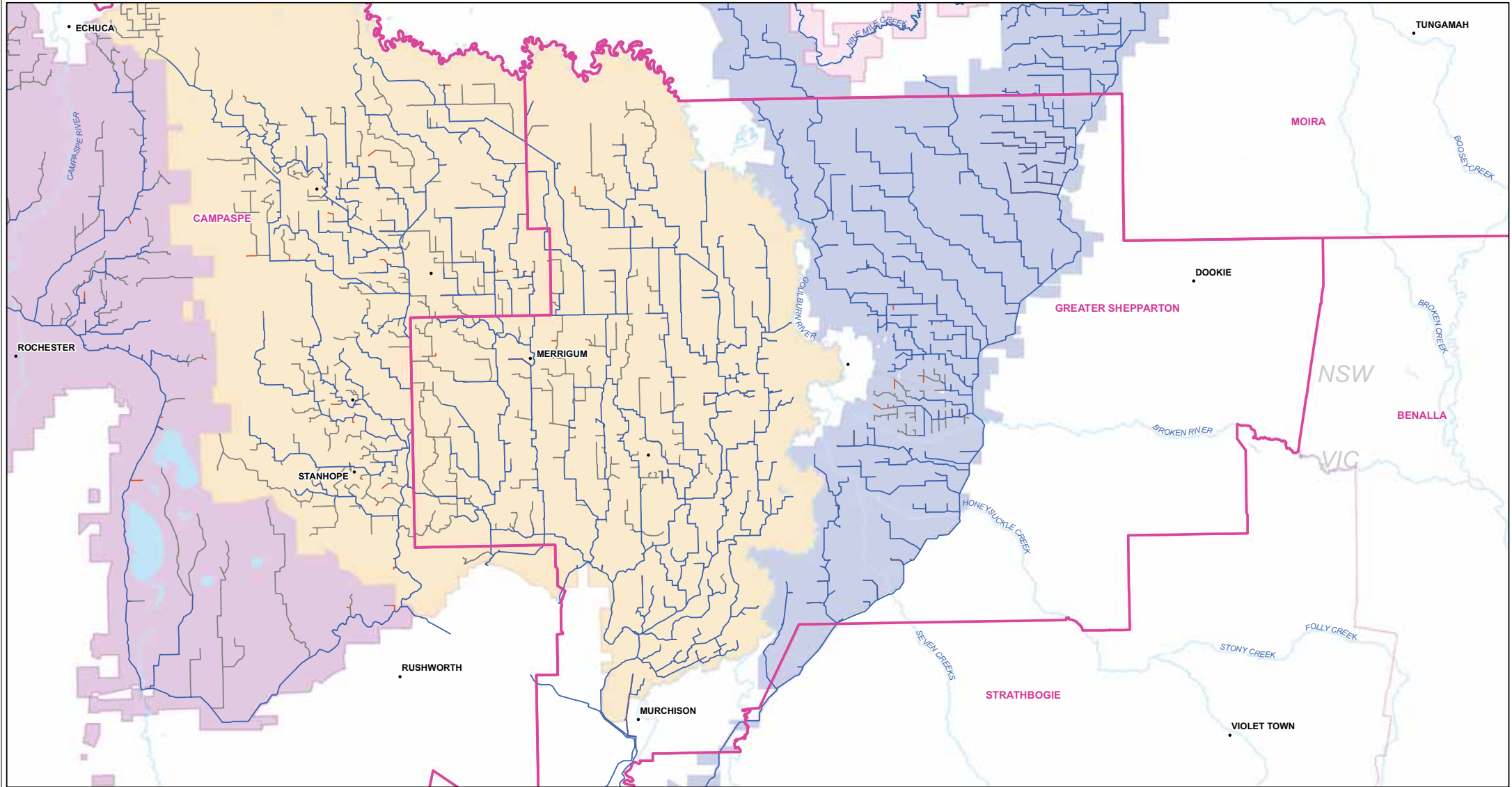
- Local Government Area
- Waterbodies



DATA SOURCES

[© Commonwealth of Australia (Geoscience Australia) 2006
Geodata Topo 250k Series 3; Vicmap Data © State of Victoria
2014; Goulburn-Murray Water 2015]

COPYRIGHT: The concepts and information contained in this document are the copyright of Jacobs. Use or copying of the document in whole or in part without the written permission of Jacobs constitutes an infringement of copyright. Jacobs does not warrant that this document is definitive nor free of error and does not accept liability for any loss caused or arising from reliance upon information provided herein.



Legend

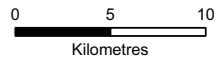
Backbone Channels

- Backbone
- Backbone Subject to Further Investigation
- GMW Remaining Channel
- Current GMW Pipeline
- Watercourse Lines

Irrigation Areas

- Central Goulburn
- Murray Valley
- Loddon Valley
- Rochester
- Shepparton
- Torrumbarry

- Local Government Area
- Waterbodies



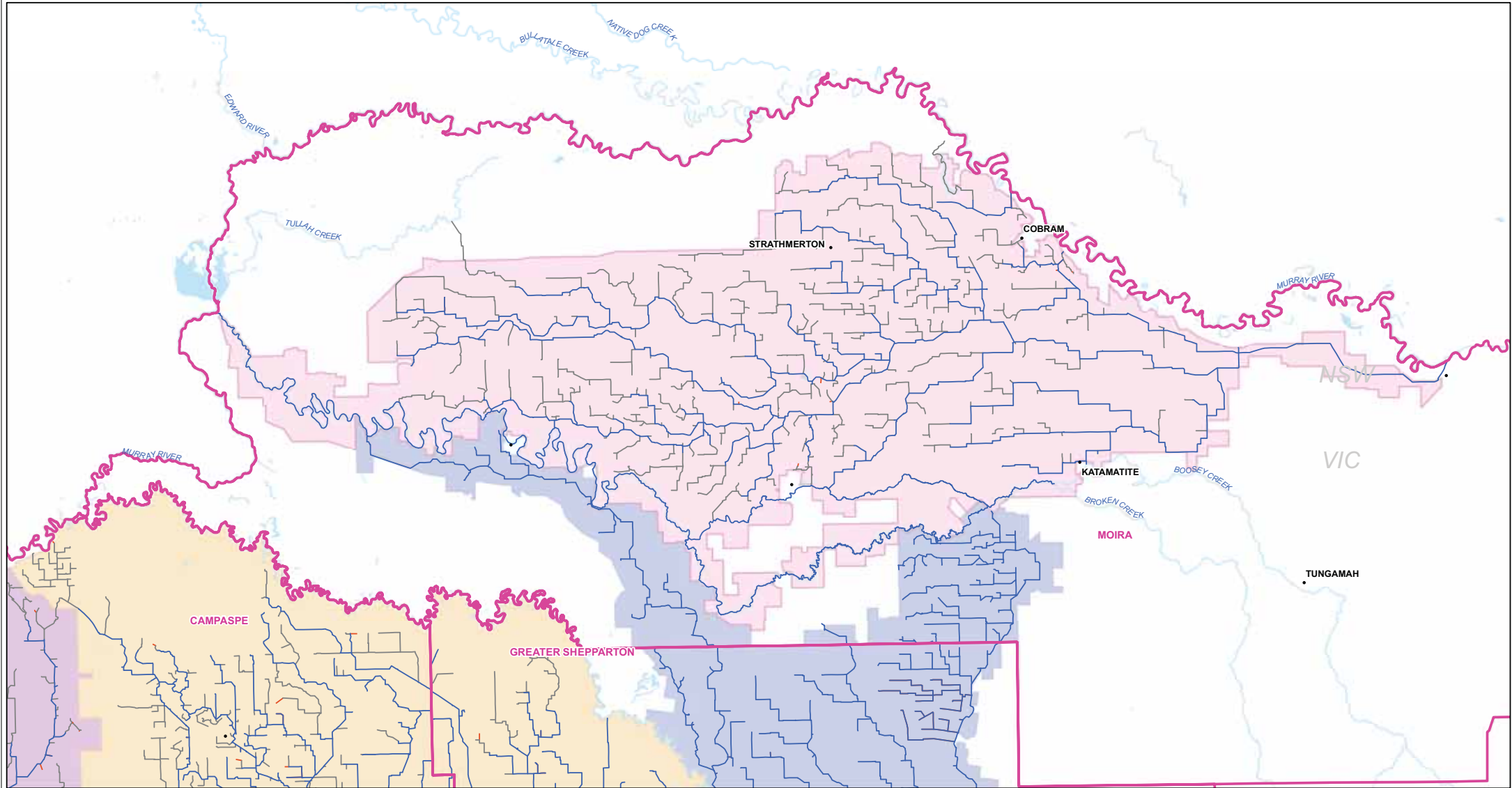
IS074800
[GDA 94 | MGA Zone 55]
1:280,000 @ A3



DATA SOURCES

[© Commonwealth of Australia (Geoscience Australia) 2006
Geodata Topo 250k Series 3; Vicmap Data © State of Victoria
2014; Goulburn-Murray Water 2015]

COPYRIGHT: The concepts and information contained in this document are the copyright of Jacobs. Use or copying of the document in whole or in part without the written permission of Jacobs constitutes an infringement of copyright. Jacobs does not warrant that this document is definitive nor free of error and does not accept liability for any loss caused or arising from reliance upon information provided herein.



Legend

Backbone Channels

- Backbone
- Backbone Subject to Further Investigation
- GMW Remaining Channel
- Current GMW Pipeline
- Watercourse Lines

Irrigation Areas

- Central Goulburn
- Murray Valley
- Loddon Valley
- Rochester
- Shepparton
- Torrumbarry

- Local Government Area
- Waterbodies



0 5 10
Kilometres

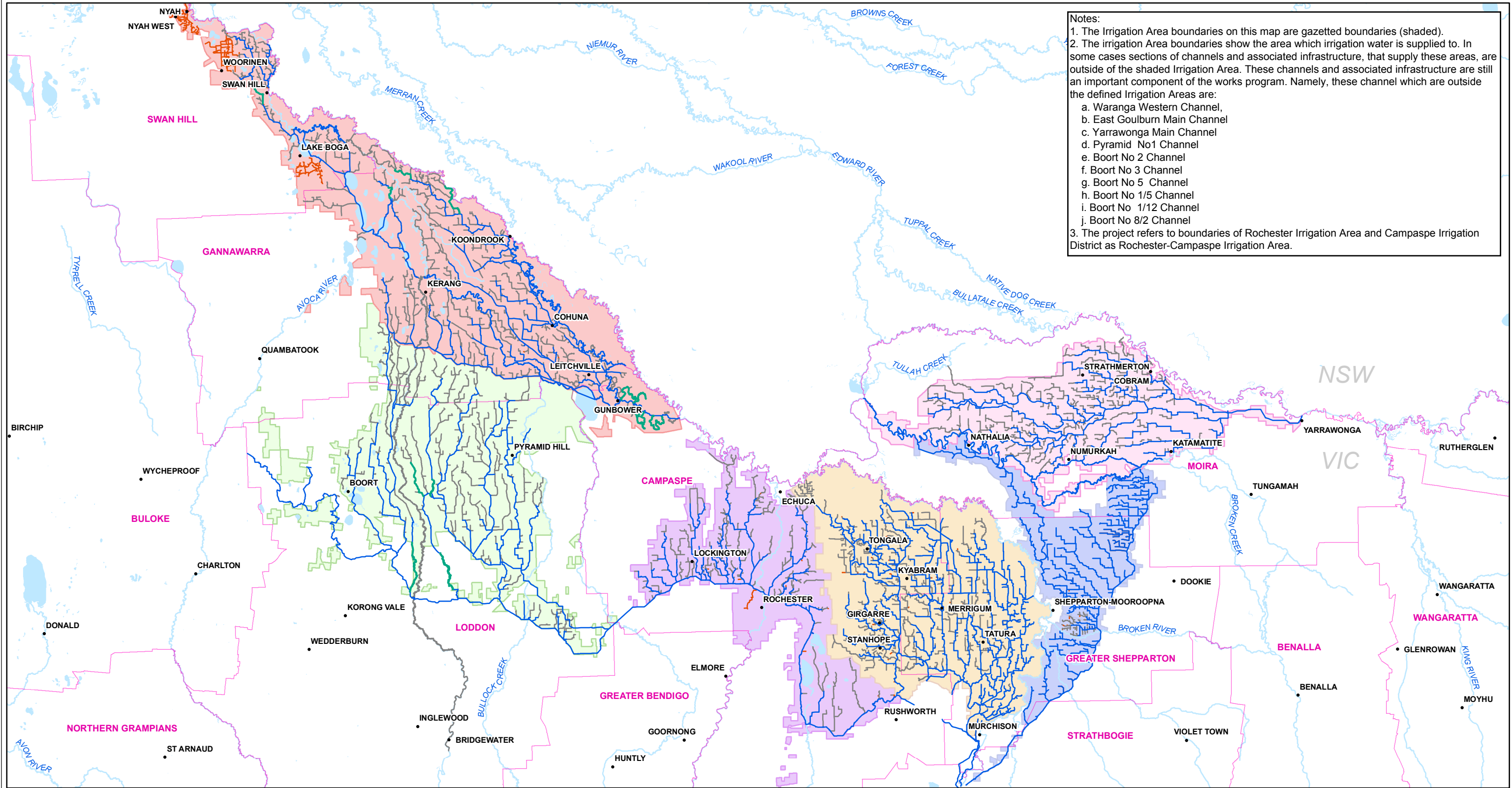
IS074800
[GDA 94 | MGA Zone 55]
1:285,000 @ A3



DATA SOURCES

[© Commonwealth of Australia (Geoscience Australia) 2006
Geodata Topo 250k Series 3; Vicmap Data © State of Victoria
2014; Goulburn-Murray Water 2015]

COPYRIGHT: The concepts and information contained in this document are the copyright of Jacobs. Use or copying of the document in whole or in part without the written permission of Jacobs constitutes an infringement of copyright. Jacobs does not warrant that this document is definitive nor free of error and does not accept liability for any loss caused or arising from reliance upon information provided herein.



Notes:

- The Irrigation Area boundaries on this map are gazetted boundaries (shaded).
- The irrigation Area boundaries show the area which irrigation water is supplied to. In some cases sections of channels and associated infrastructure, that supply these areas, are outside of the shaded Irrigation Area. These channels and associated infrastructure are still an important component of the works program. Namely, these channel which are outside the defined Irrigation Areas are:
 - Waranga Western Channel,
 - East Goulburn Main Channel
 - Yarrowonga Main Channel
 - Pyramid No1 Channel
 - Boort No 2 Channel
 - Boort No 3 Channel
 - Boort No 5 Channel
 - Boort No 1/5 Channel
 - Boort No 1/12 Channel
 - Boort No 8/2 Channel
- The project refers to boundaries of Rochester Irrigation Area and Campaspe Irrigation District as Rochester-Campaspe Irrigation Area.

Legend

Backbone Channels

- Backbone
- Backbone Subject to Further Investigation
- GMW Remaining Channel
- Current GMW Pipeline
- Watercourse Lines

Irrigation Areas

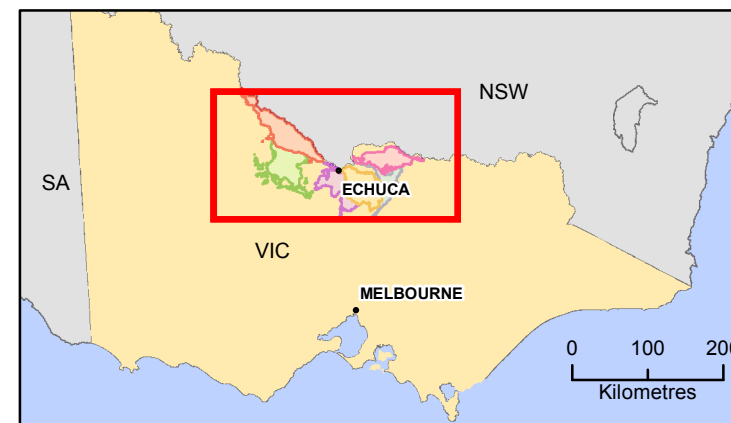
- Central Goulburn
- Murray Valley
- Loddon Valley
- Rochester
- Shepparton
- Torrumbarry

Local Government Area

Waterbodies



IS074800
[GDA 94 | MGA Zone 55]
1:800,000 @ A3



DATA SOURCES

[© Commonwealth of Australia (Geoscience Australia) 2006
Geodata Topo 250k Series 3; Vicmap Data © State of Victoria
2014; Goulburn-Murray Water 2015]

COPYRIGHT: The concepts and information contained in this document are the copyright of Jacobs. Use or copying of the document in whole or in part without the written permission of Jacobs constitutes an infringement of copyright. Jacobs does not warrant that this document is definitive nor free of error and does not accept liability for any loss caused or arising from reliance upon information provided herein.