

Barmah Boat Ramp Concept Master Plan Barnah



Prepared by

Spiire

Tim Buykx - Registered Landscape Architect
16 Bridge Street Bendigo 3550 PO Box 1064
Bendigo Victoria 3552 Australia
T 61 3 5448 2500 **F** 61 3 5448 2599
D 61 3 5448 2526 **M** 0437 927 216
E tim.buykx@spiire.com.au
spiire.com.au

For

Moira Shire Council

Mark Foord - Manager Infrastructure Planning

Issue Date	Revision No	Author	Checked	Approved
July 2012	DRAFT	SE / JD	TB	TB
April 2013	A	JD	TB	TB

**Barmah Boat Ramp
Concept Plan**

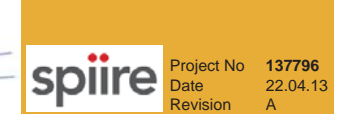
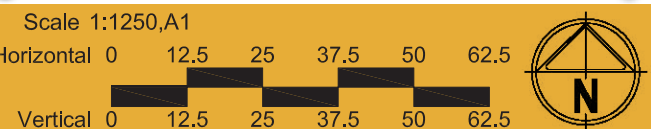


Project No 137796
Date 22.04.13
Revision A

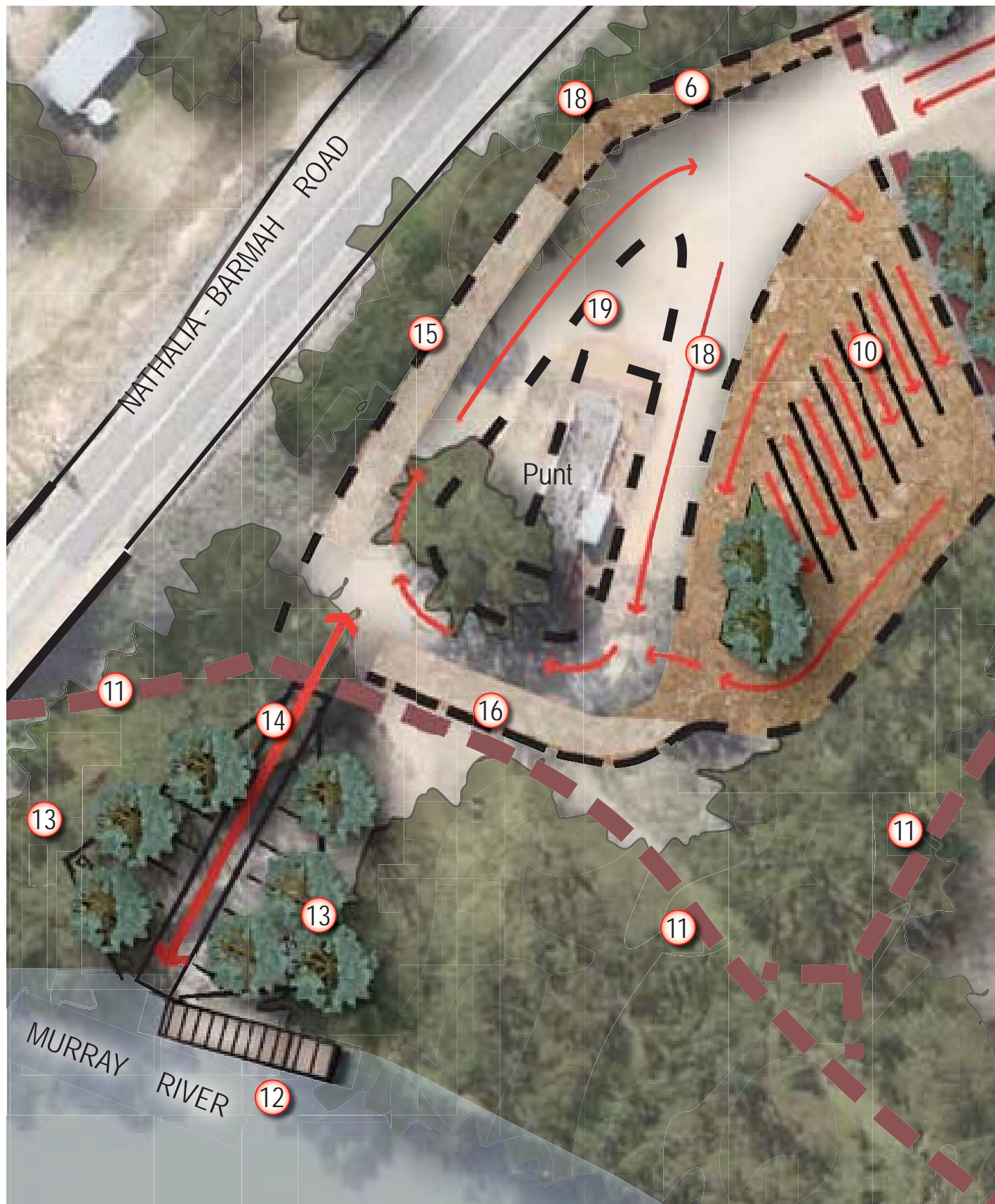


- | | | | |
|--|--|---|--|
| ① Existing exotic vegetation removed in park | ⑥ Reconfigured parking to be parallel and formalised | ⑪ Pedestrian path and connections | ⑮ Boat tie down area |
| ② Intersection to be reconfigured to create perpendicular turn in / turn out | ⑦ Access way removed | ⑫ New pontoon parallel with direction of river flow | ⑯ Waiting to Launch area |
| ③ New mobile library layby | ⑧ Area of existing vegetation on public land to be removed | ⑬ Batters to boat ramp edges reduced by widening including limited tree removal | ⑰ Demolish and remove toilet block |
| ④ New combined park shelter and DDA compliant toilet block | ⑨ Native River Red Gum forest to be retained and protected | ⑭ Single lane boat ramp retained | ⑱ New fencing to formalise traffic and parking |
| ⑤ Playspace remade and replaced | ⑩ Car and boat trailer car park | | ⑲ Replace fencing and provide interpretive signage to Punt |

**Barmah Boat Ramp
Concept Plan**



Project No 137796
Date 22.04.13
Revision A



DEVELOPMENT RECOMMENDATIONS

CAR PARKING

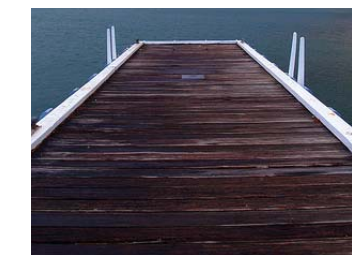
- Car and boat trailer car park
- Boat tie down area
- Waiting to Launch area
- Reconfigured parking to be parallel and formalised



DEVELOPMENT RECOMMENDATIONS

BOAT LAUNCHING AND RETRIEVAL

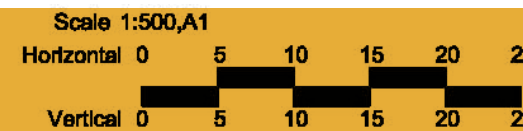
- Boat launching development will include one way access road, car/trailer parking area, contained vehicle manoeuvring area, pontoon, and safe pedestrian linkages.
- Selected tree removal required to achieve appropriate parking area.
- New pontoon parallel with direction of river flow
- Batters to boat ramp edges reduced by widening including limited tree removal
- Single lane boat ramp retained

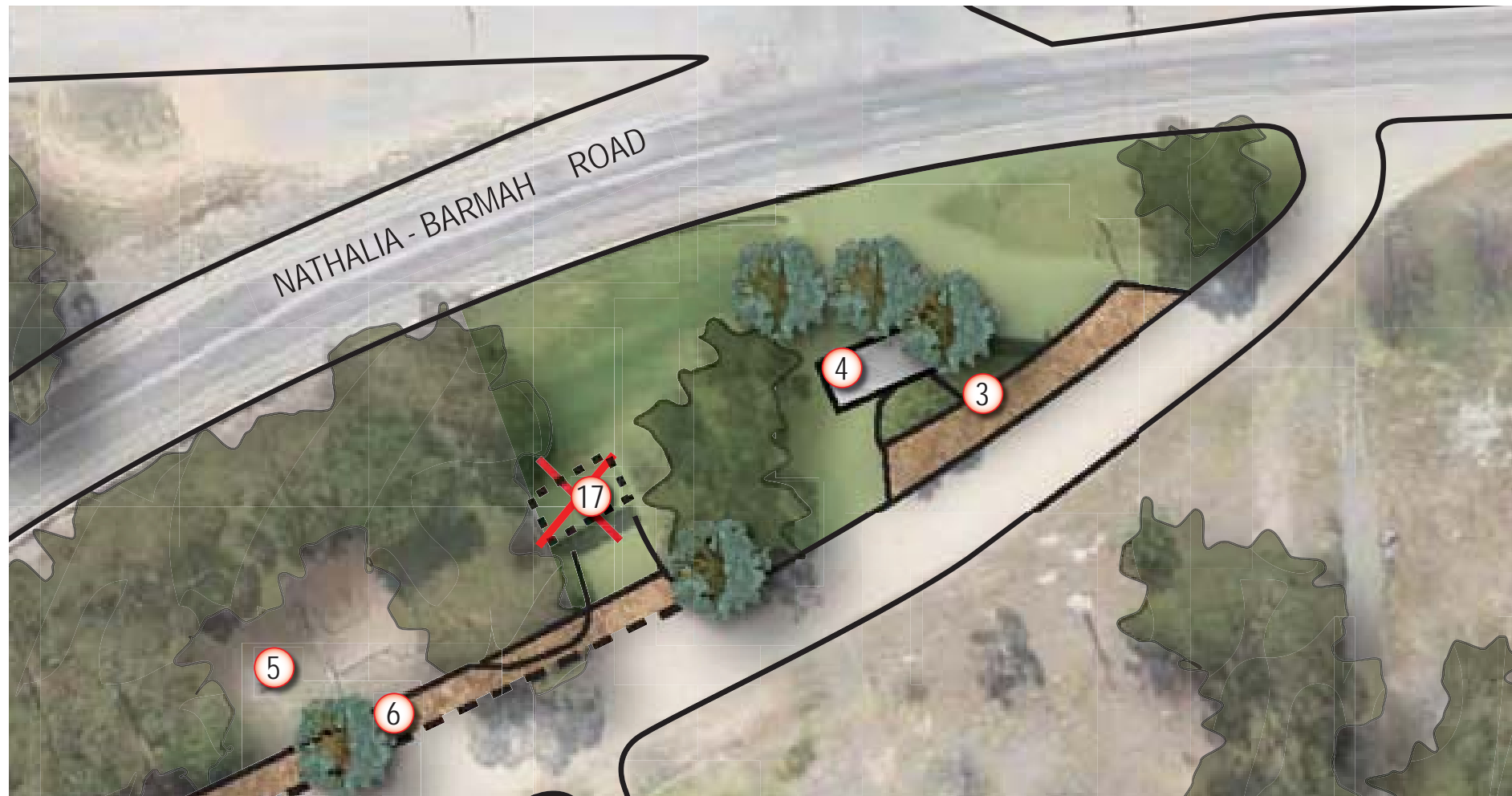


DEVELOPMENT RECOMMENDATIONS

INTERPRETIVE SIGNS

- Develop and use a consistent suite of signs for site identification, wayfinding and regulatory needs.
- Use consistent materials and structures with sign panels being as required.
- Match signage suite materials with furniture suite to provide links, reference and management compatibility.
- Include 'regulatory warning' signage with standard images, colours and message.





DEVELOPMENT RECOMMENDATIONS

GRAVEL PATHS

- Capture the essence of bush theme through development and use of a consistent locally sourced gravel paving suite
- Develop paving suite consistent with Moira Council's asset management system that allows periodic maintenance and replacement at end of life.
- Develop paving suite with robust materiality, connections and drainage.



DEVELOPMENT RECOMMENDATIONS

PLAY SPACE

- Playspace remade and replaced
- Childrens play space is to provide for a variety of play experiences through both structured and informal play elements.
- Capture the essence of play in the local bush / beach environment through connections with surrounding landscape and river fauna theme.
- Emphasise play in the natural environment through sculptural play elements based on river fauna.



DEVELOPMENT RECOMMENDATIONS

FENCING

- Develop and use a consistent fencing suite
- Develop fencing suite consistent with Moira Council's asset management system that allows periodic upgrade, maintenance and replacement at end of life.
- Suite of fence with timber and galvanised iron (or similar) materials to be robust and fit with forest theme.



DEVELOPMENT RECOMMENDATIONS

FURNITURE SUITE

- Develop and use a consistent furniture suite
- Develop furniture suite consistent with Moira Council's asset management system that allows periodic upgrade, maintenance and replacement at end of life.
- Suite of furniture with timber and galvanised iron (or similar) materials to be robust and fit with forest theme.