

REV	DESCRIPTION	DATE	CKD	AUTH

▲ Streamflow Gauges

■ Buildings

□ Limit of Modelling

— Streamlines

🏥 Hospitals

👮 Police

🎓 Schools

🚒 Fire Stations

— Dual Carriageway

— Major Road

— Minor Road

— Railway

Max Flood Depth (m)

< 0.1

0.1 - 0.3

0.3 - 0.5

0.5 - 1

1.0 - 1.5

1.5 - 2

> 2

N

N

Locality Map



Drawn:	T. Craig
Project Manager:	A. Northfield
Contractors	MSC00001
Drawing No.:	
Moira Shire Council	
Project Manager:	D. Huxtable

Data Location: S:\3\_P\Projects\MSC00001\5\_Technical\2\_HydraulicModelling\1\_Spatial\Mapping\MSC00001\_Data\drivenpages\_2012Extent\_Depths\_002.mxd

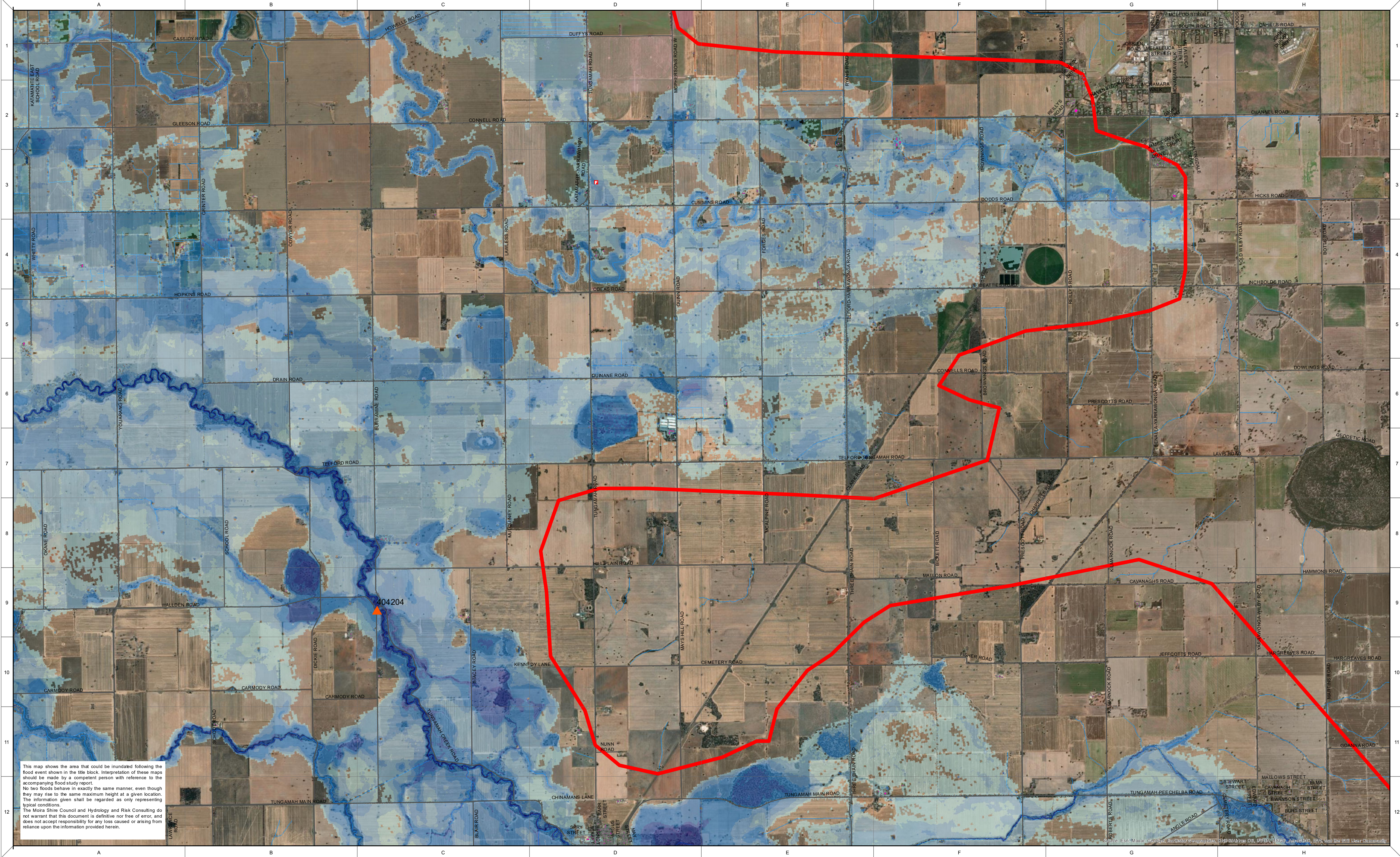
**INUNDATION IN BROKEN AND BOOSEY CREEKS CATCHMENT**  
**2012 MODELLED FLOOD DEPTH - 1**

March 2012 Regional Flood Event  
Modelled Flood Depths

0 1 2  
Kilometers

Scale: 1:31,990 when printed @ A1	Date: 18/07/2022	Sheet No.: 1 of 7
Project No.: NSW00038	Tender No.:	
		
A1	Last updated: 18/07/2022	Rev A





REV	DESCRIPTION	DATE	CKD	AUTH

**Legend**

- Streamflow Gauges
- Buildings
- Limit of Modelling
- Streamlines

**Roads**

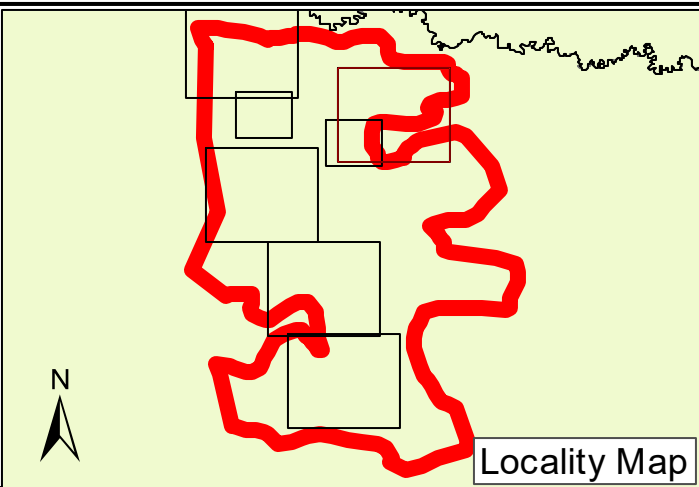
- Hospitals
- Police
- Schools
- Fire Stations
- Dual Carriageway
- Major Road
- Minor Road
- Railway

**Max Flood Depth (m)**

- < 0.1
- 0.1 - 0.3
- 0.3 - 0.5
- 0.5 - 1
- 1.0 - 1.5
- 1.5 - 2
- > 2

Scale: 0 100 200 300 400 500 600 700 800 900 1000

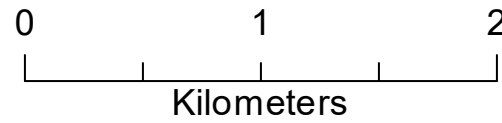
North Arrow





Drawn: T. Craig	
Project Manager:	A. Northfield
Contractors	
Drawing No.:	MSC00001
Moiria Shire Council	
Project Manager:	D. Huxtable

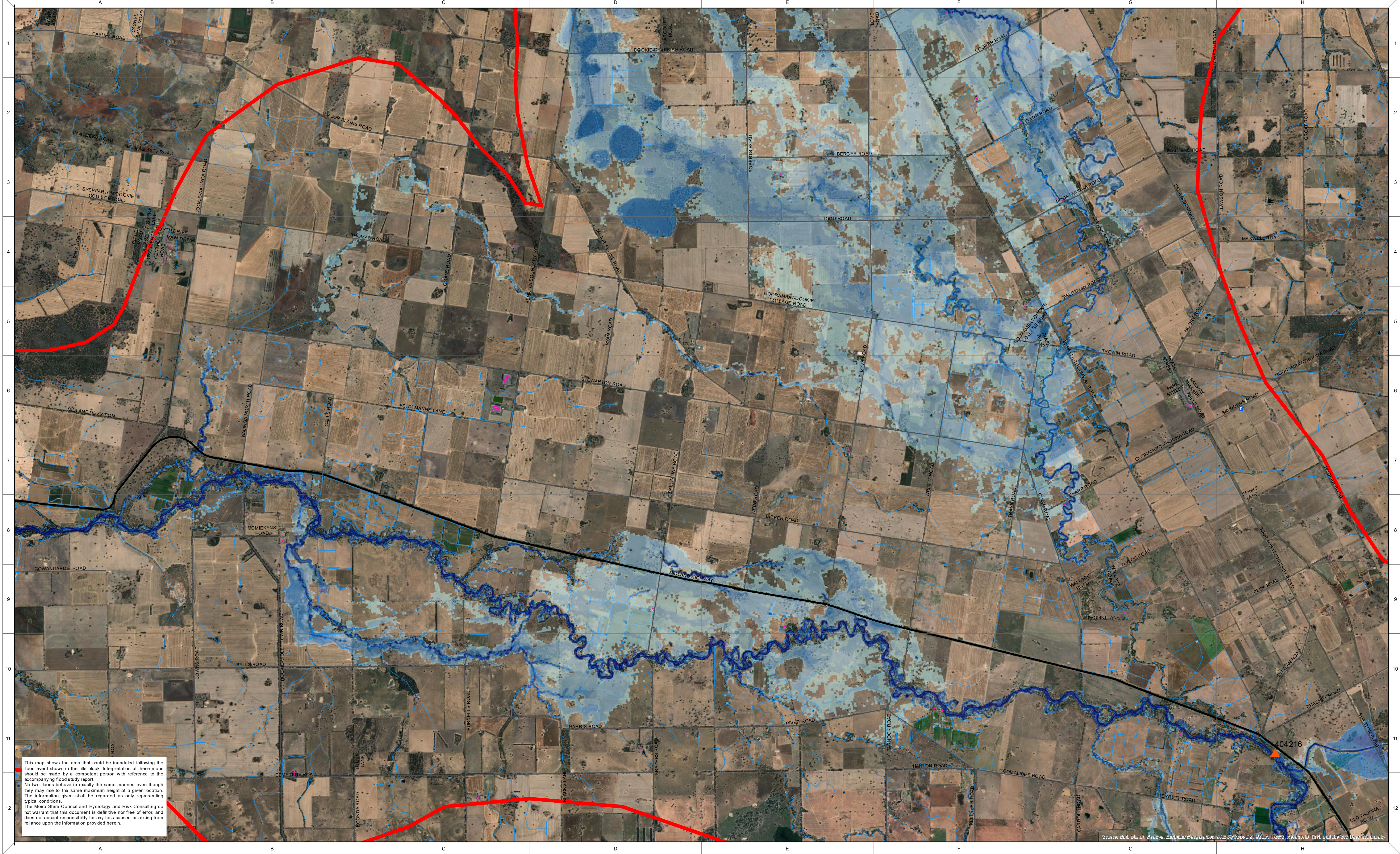
INUNDATION IN BROKEN AND BOOSEY  
CREEKS CATCHMENT  
2012 MODELLLED FLOOD DEPTH - 2

## March 2012 Regional Flood Event Modelled Flood Depths



Scale: 1:31,990 when printed @ A1	Date: 18/07/2022	Sheet No.: 2 of 7
Project No.: NSW00038	Tender No.:	
  GOLBURN BROKEN COUNCIL		
A1	Last updated: 18/07/2022	Rev A





REV	DESCRIPTION	DATE	CKD	AUTH

Streamflow Gauges

Buildings

Limit of Modelling

Streamlines

Hospitals

Police

Schools

Fire Stations

Dual Carriageway

Major Road

Minor Road

Railway

< 0.1

0.1 - 0.3

0.3 - 0.5

0.5 - 1

1.0 - 1.5

1.5 - 2

> 2

Drawn:  
T. Craig

Project Manager:  
A. Northfield

Contractors  
Drawing No.: MSC00001

Moira Shire Council  
Project Manager: D. Huxtable

Inundation in Broken and Boosey Creeks Catchment

2012 Modelled Flood Depth - 3

March 2012 Regional Flood Event

Modelled Flood Depths

0

1

2

Kilometers

moira

SHIRE

GOULBURN BROKEN

COUNCIL

Last updated:

18/07/2022

Rev

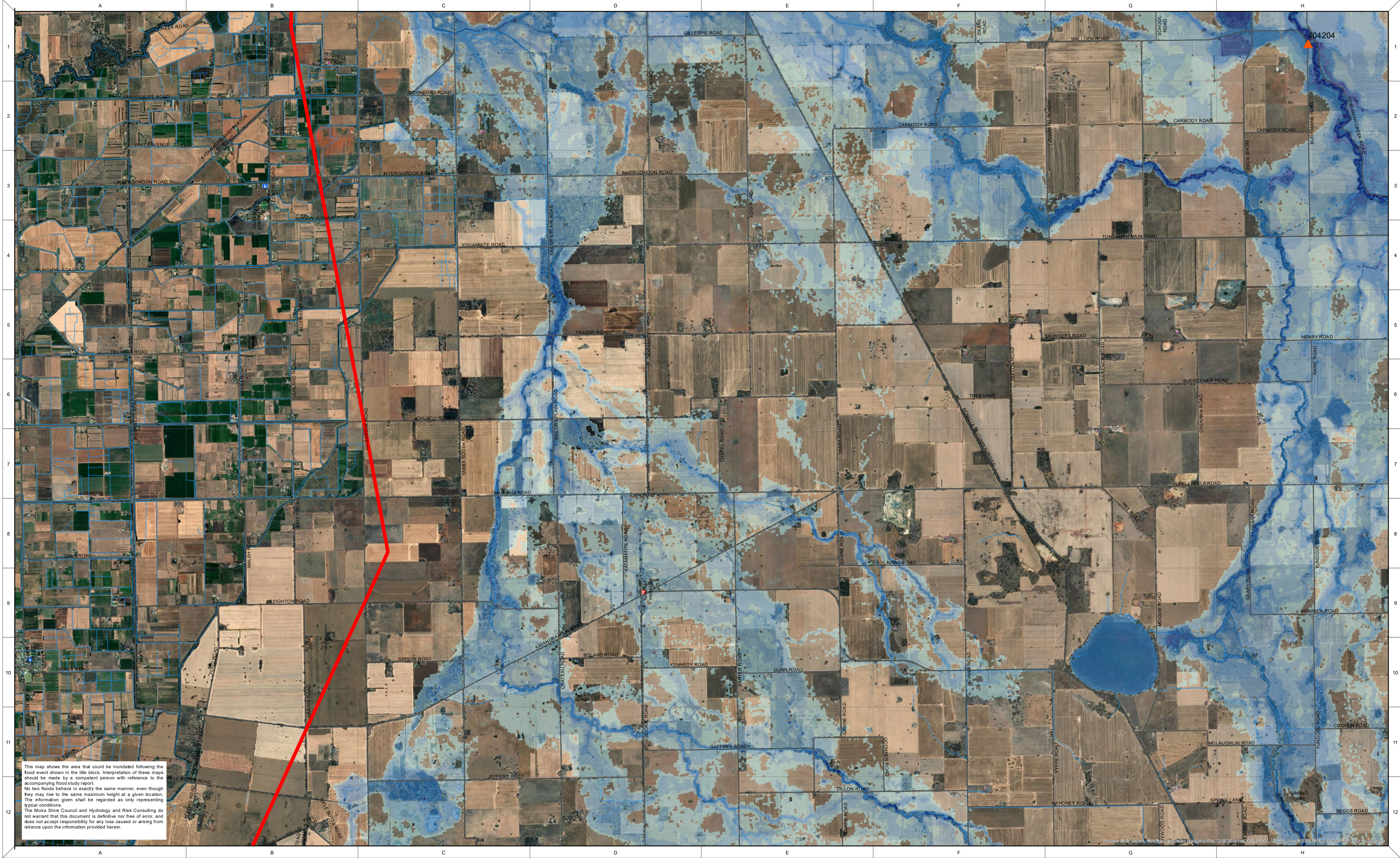
A

Scale: 1:31,990 when printed @ A1	Date: 18/07/2022	Sheet No.: 3 of 7
Project No.: NSW00038	Tender No.:	
A1	Last updated: 18/07/2022	Rev A









REV	DESCRIPTION	DATE	CKD	AUTH

Streamflow Gauges

Buildings

Limit of Modelling

Streamlines

Hospitals

Police

Schools

Fire Stations

Dual Carriageway

Major Road

Minor Road

Railway

Max Flood Depth (m)

< 0.1

0.1 - 0.3

0.3 - 0.5

0.5 - 1

1.0 - 1.5

1.5 - 2

> 2

N

Drawn:	T. Craig
Project Manager:	A. Northfield
Contractors	MSC00001
Drawing No.:	
Moira Shire Council	
Project Manager:	D. Huxtable

Inundation in Broken and Boosey Creeks Catchment

2012 Modelled Flood Depth - 5

March 2012 Regional Flood Event

Modelled Flood Depths

0

1

2

Kilometers

Scale:

1:31,990

when printed @ A1

Project No.:

NSW00038

moira

SHIRE

GOULBURN BROKEN

GOULBURN BROKEN COUNCIL

Last updated:

18/07/2022

Rev

A

Date:

18/07/2022

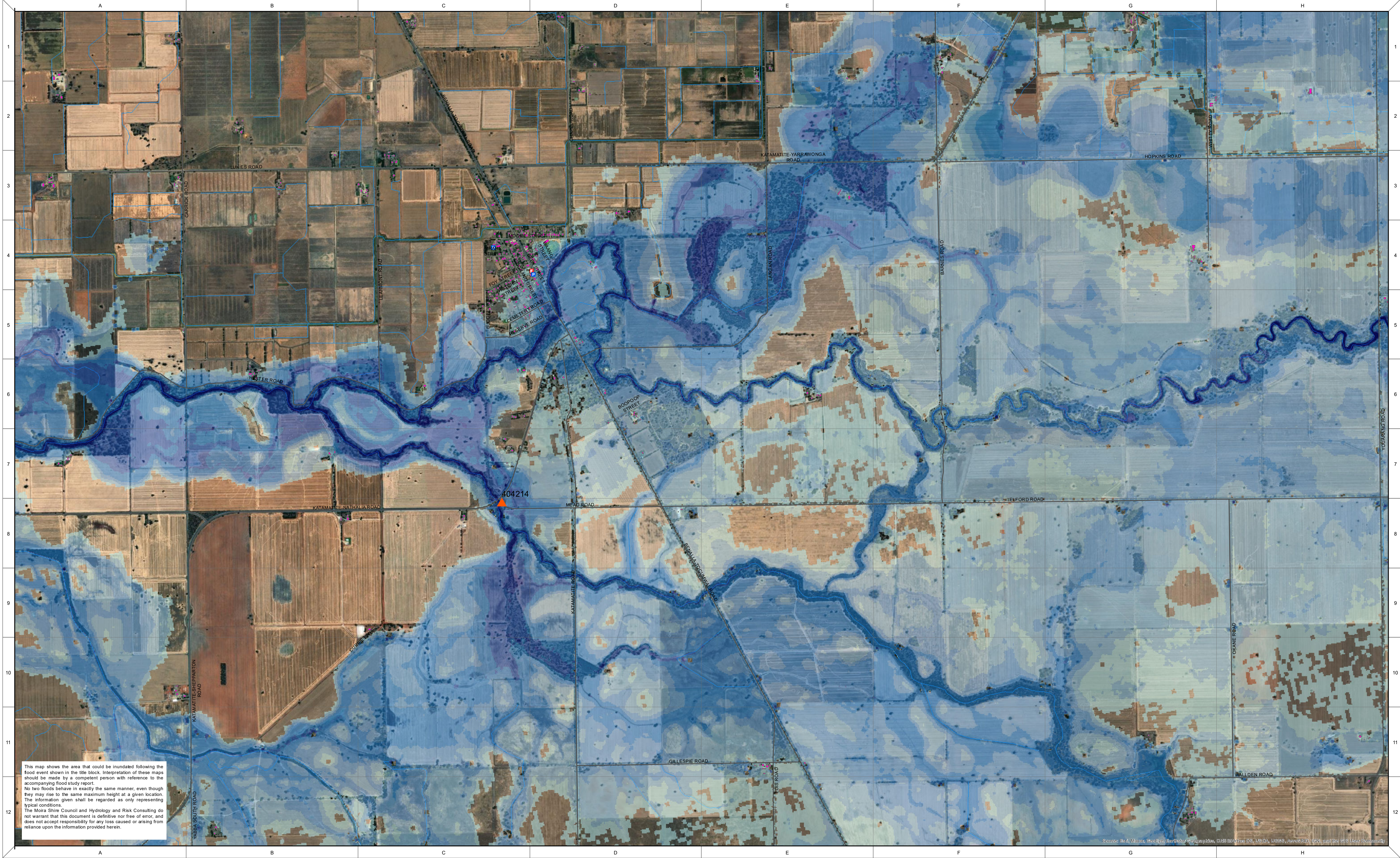
Tender No.:

Sheet No.:

5 of 7

Data Location: S:\3\_P\Projects\MSC00001\5\_Technical\2\_HydraulicModelling\1\_Spatial\Mapping\MSC00001\_Data\drivenpages\_2012\Extent\_Depths\_002.mxd





REV	DESCRIPTION	DATE	CKD	AUTH

**Legend**

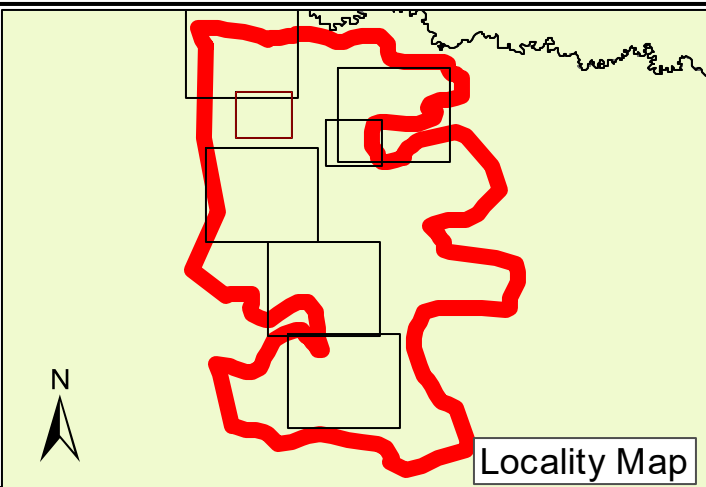
- Streamflow Gauges
- Buildings
- Limit of Modelling
- Streamlines

**Roads**

- Hospitals
- Police
- Schools
- Fire Stations
- Dual Carriageway
- Major Road
- Minor Road
- Railway

**Max Flood Depth (m)**

- < 0.1
- 0.1 - 0.3
- 0.3 - 0.5
- 0.5 - 1
- 1.0 - 1.5
- 1.5 - 2
- > 2



Drawn:	T. Craig
Project Manager:	A. Northfield
Contractors	MSC00001
Drawing No.:	MSC00001
Moira Shire Council	
Project Manager:	D. Huxtable

Data Location: S:\3\_Projects\MSC00001\5\_Technical\2\_HydraulicModelling\1\_Spatial\Mapping\MSC00001\_Data\drivenpages\_2012Extent\_Depths\_002.mxd

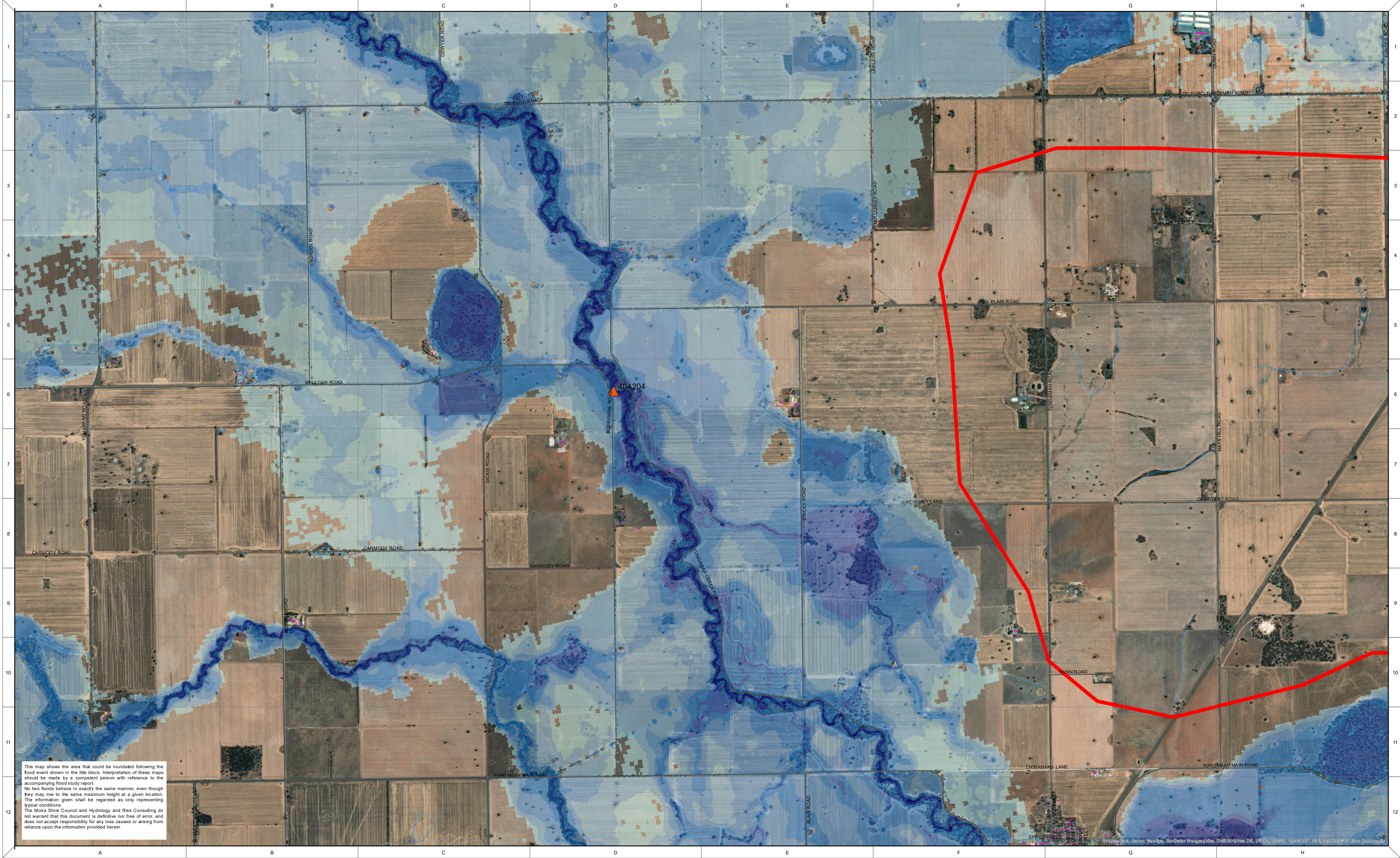
**INUNDATION IN BROKEN AND BOOSEY CREEKS CATCHMENT**  
**2012 MODELLLED FLOOD DEPTH - 6**

March 2012 Regional Flood Event  
Modelled Flood Depths

0 0.75 1.5  
Kilometers

Scale: 1:16,000 when printed @ A1	Date: 18/07/2022	Sheet No.: 6 of 7
Project No.: NSW00038	Tender No.:	
<div><div></div><div></div></div>		
A1	Last updated: 18/07/2022	Rev A





REV	DESCRIPTION	DATE	CKD	AUTH

▲ Streamflow Gauges

■ Buildings

□ Limit of Modelling

— Streamlines

🏥 Hospitals

👮 Police

🎓 Schools

🚒 Fire Stations

— Dual Carriageway

— Major Road

— Minor Road

—+— Railway

Max Flood Depth (m)

< 0.1

0.1 - 0.3

0.3 - 0.5

0.5 - 1

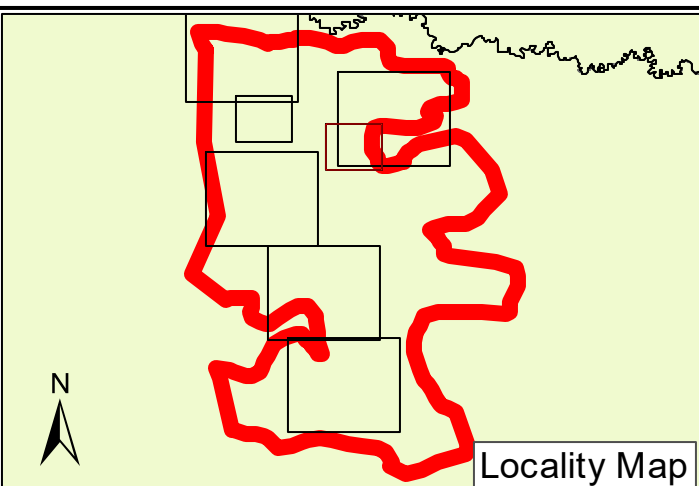
1.0 - 1.5

1.5 - 2

> 2

N

N



Drawn:	T. Craig
Project Manager:	A. Northfield
Contractors	MSC00001
Drawing No.:	
Moira Shire Council	
Project Manager:	D. Huxtable

INUNDATION IN BROKEN AND BOOSEY CREEKS CATCHMENT

2012 MODELLLED FLOOD DEPTH - 7

March 2012 Regional Flood Event

Modelled Flood Depths

0

0.75

1.5

Kilometers

Scale: 1:16,000 when printed @ A1	Date: 18/07/2022	Sheet No.: 7 of 7
Project No.: NSW00038	Tender No.:	
<div><div></div><div></div></div>		
A1	Last updated: 18/07/2022	Rev A