

This report provides information to support an application to remove, destroy or lop native vegetation in accordance with the *Guidelines for the removal, destruction or lopping of native vegetation*. The report **is not an assessment by DELWP** of the proposed native vegetation removal. Native vegetation information and offset requirements have been determined using spatial data provided by the applicant or their consultant.

Date of issue: 02/06/2023

Report ID: GEN_2023_421

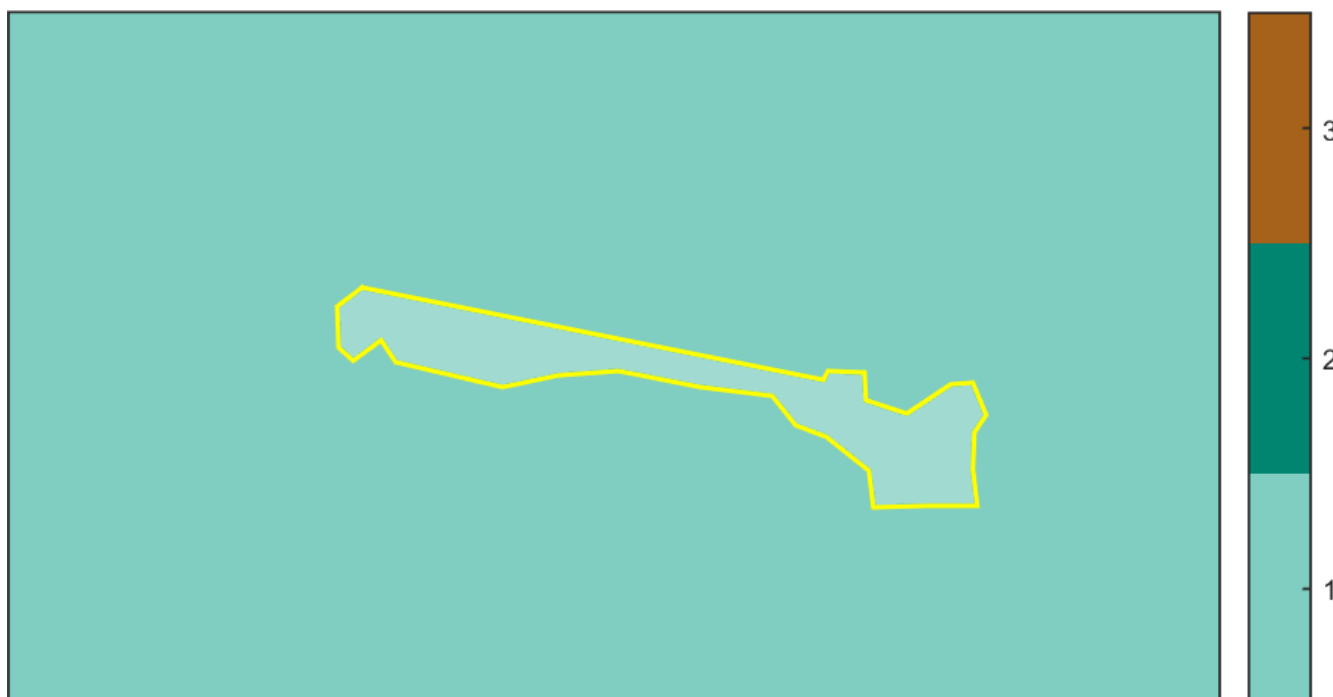
Time of issue: 11:43 am

Project ID	featureclass_094415
------------	---------------------

Assessment pathway

Assessment pathway	Basic Assessment Pathway
Extent including past and proposed	0.081 ha
Extent of past removal	0.000 ha
Extent of proposed removal	0.081 ha
No. Large trees proposed to be removed	0
Location category of proposed removal	Location 1 The native vegetation is not in an area mapped as an endangered Ecological Vegetation Class (as per the statewide EVC map), sensitive wetland or coastal area. Removal of less than 0.5 hectares in this location will not have a significant impact on any habitat for a rare or threatened species

1. Location map



Offset requirements if a permit is granted

Any approval granted will include a condition to obtain an offset that meets the following requirements:

General offset amount¹	0.026 general habitat units
Vicinity	North East Catchment Management Authority (CMA) or Moira Shire Council
Minimum strategic biodiversity value score ²	0.592
Large trees	0 large trees

NB: values within tables in this document may not add to the totals shown above due to rounding

Appendix 1 includes information about the native vegetation to be removed

Appendix 2 includes information about the rare or threatened species mapped at the site.

Appendix 3 includes maps showing native vegetation to be removed and extracts of relevant species habitat importance maps

¹ The general offset amount required is the sum of all general habitat units in Appendix 1.

² Minimum strategic biodiversity score is 80 per cent of the weighted average score across habitat zones where a general offset is required

Next steps

Any proposal to remove native vegetation must meet the application requirements of the Basic Assessment Pathway and it will be assessed under the Basic Assessment Pathway.

If you wish to remove the mapped native vegetation you are required to apply for a permit from your local council. Council will refer your application to DELWP for assessment, as required. **This report is not a referral assessment by DELWP.**

This *Native vegetation removal report* must be submitted with your application for a permit to remove, destroy or lop native vegetation.

Refer to the *Guidelines for the removal, destruction or lopping of native vegetation* (the Guidelines) for a full list of application requirements. This report provides information that meets the following application requirements:

- The assessment pathway and reason for the assessment pathway
- A description of the native vegetation to be removed (met unless you wish to include a site assessment)
- Maps showing the native vegetation and property
- The offset requirements determined in accordance with section 5 of the Guidelines that apply if approval is granted to remove native vegetation.

Additional application requirements must be met including:

- Topographical and land information
- Recent dated photographs
- Details of past native vegetation removal
- An avoid and minimise statement
- A copy of any Property Vegetation Plan that applies
- A defensible space statement as applicable
- A statement about the Native Vegetation Precinct Plan as applicable
- An offset statement that explains that an offset has been identified and how it will be secured.

© The State of Victoria Department of Environment, Land, Water and Planning Melbourne 2023

This work is licensed under a Creative Commons Attribution 4.0 International licence. You are free to re-use the work under that licence, on the condition that you credit the State of Victoria as author. The licence does not apply to any images, photographs or branding, including the Victorian Coat of Arms, the Victorian Government logo and the Department of Environment, Land, Water and Planning logo. To view a copy of this licence, visit <http://creativecommons.org/licenses/by/3.0/au/deed.en>

Authorised by the Victorian Government, 8 Nicholson Street, East Melbourne.

For more information contact the DELWP Customer Service Centre 136 186

www.delwp.vic.gov.au

Disclaimer

This publication may be of assistance to you but the State of Victoria and its employees do not guarantee that the publication is without flaw of any kind or is wholly appropriate for your particular purposes and therefore disclaims all liability for any error, loss or other consequence which may arise from you relying on any information in this publication.

Obtaining this publication does not guarantee that an application will meet the requirements of Clauses 52.16 or 52.17 of the Victoria Planning Provisions and Victorian planning schemes or that a permit to remove native vegetation will be granted.

Notwithstanding anything else contained in this publication, you must ensure that you comply with all relevant laws, legislation, awards or orders and that you obtain and comply with all permits, approvals and the like that affect, are applicable or are necessary to undertake any action to remove, lop or destroy or otherwise deal with any native vegetation or that apply to matters within the scope of Clauses 52.16 or 52.17 of the Victoria Planning Provisions and Victorian planning schemes.

Appendix 1: Description of native vegetation to be removed

All zones require a general offset, the general habitat units each zone is calculated by the following equation in accordance with the Guidelines:

$$\text{General habitat units} = \text{extent} \times \text{condition} \times \text{general landscape factor} \times 1.5, \text{ where the general landscape factor} = 0.5 + (\text{strategic biodiversity value score}/2)$$

The general offset amount required is the sum of all general habitat units per zone.

Native vegetation to be removed

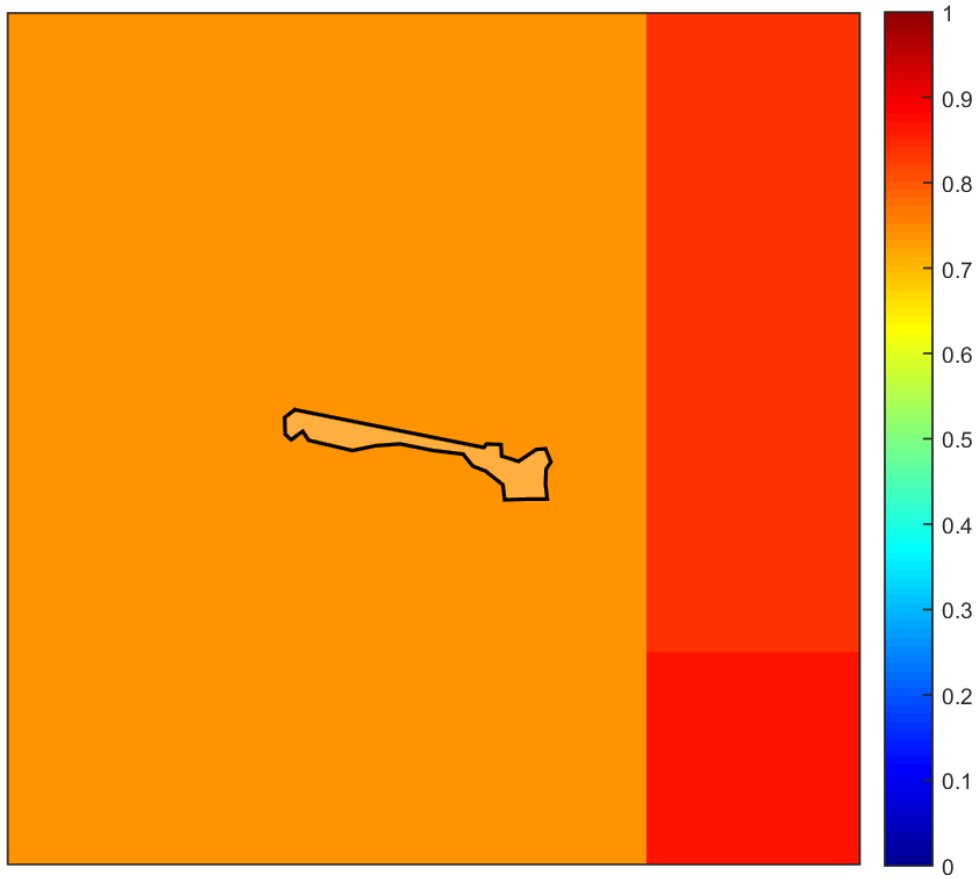
Information provided by or on behalf of the applicant in a GIS file						Information calculated by EnSym						
Zone	Type	BioEVC	BioEVC conservation status	Large tree(s)	Partial removal	Modelled Condition score	Polygon Extent	Extent without overlap	SBV score	HI score	Habitat units	Offset type
1-A	Patch			0	no	0.247	0.081	0.081	0.740		0.026	General

Appendix 2: Information about impacts to rare or threatened species' habitats on site

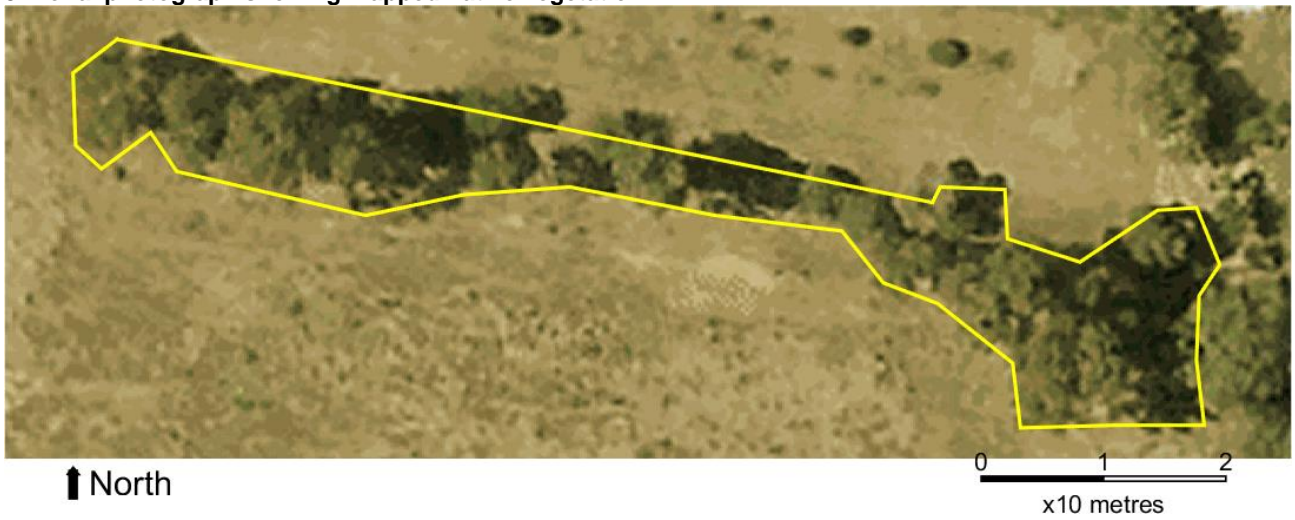
This is not applicable in the Basic Assessment Pathway.

Appendix 3 – Images of mapped native vegetation

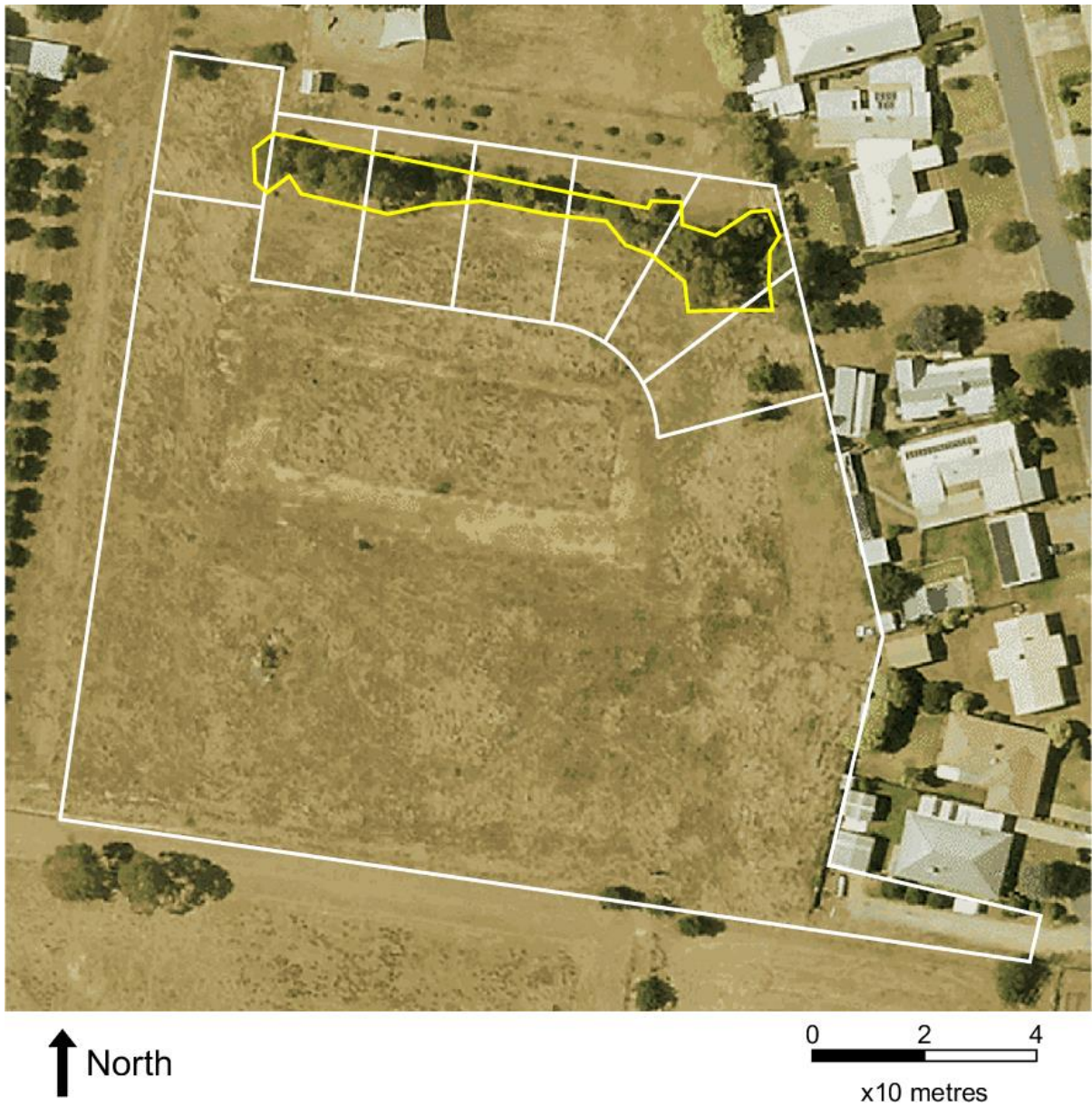
2. Strategic biodiversity values map



3. Aerial photograph showing mapped native vegetation



4. Map of the property in context



Yellow boundaries denote areas of proposed native vegetation removal.