

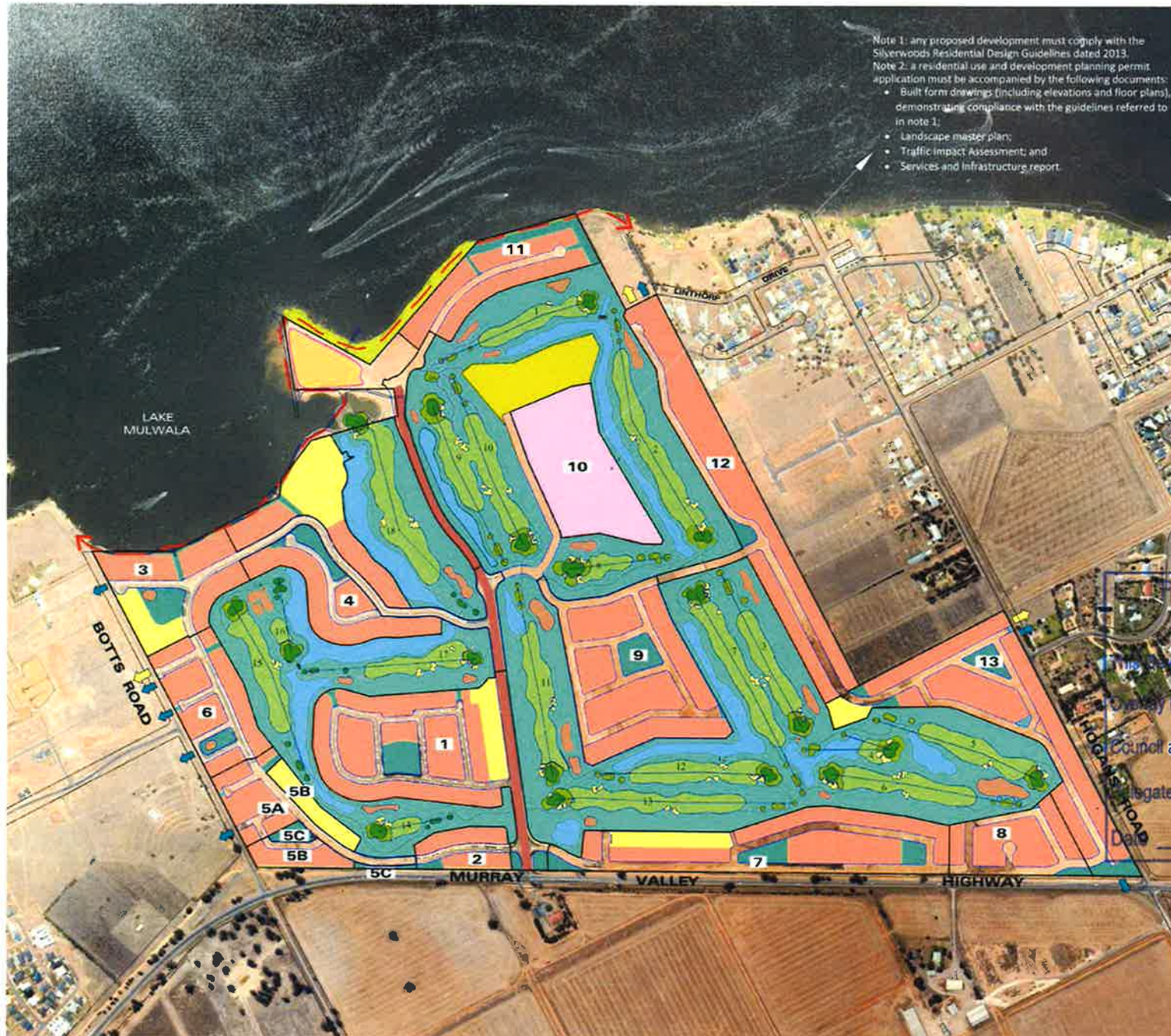


# SILVERWOODS

YARRAWONGA

## LEGEND

- Residential
- The Point Facilities
- Water Courses
- Golf Course Holes
- Golf Course
- Golf Facilities
- Public Open Space
- Recreation Reserve
- Boulevard
- Medium Density Housing
- Future Seniors Living
- Emergency Vehicle Access
- Pedestrian Access Point
- Title Boundary
- Public Access



Note 1: any proposed development must comply with the Silverwoods Residential Design Guidelines dated 2013.  
 Note 2: a residential use and development planning permit application must be accompanied by the following documents:

- Built form drawings (including elevations and floor plans), demonstrating compliance with the guidelines referred to in note 1;
- Landscape master plan;
- Traffic Impact Assessment; and
- Services and Infrastructure report.

PLANNING & ENVIRONMENT ACT 1987  
 MOIRA PLANNING SCHEME

This Development Plan is pursuant to the Development Plan  
 Overlay Number 6

Council approved this plan at its meeting on 21/11/2016  
 THOMSON PERRETT  
 Delegate [Signature]  
 golf course architects  
 23/11/2016



DEVELOPMENT PLAN  
 SILVERWOODS  
 OCTOBER 2016