



Number	YYWG 02/2023
Date of Issue	16 02 2023
Amendment Number	001
Date of Amendment	12/02/23

MOIRA SHIRE COUNCIL

AERODROME METHOD OF WORKING PLAN (MOWP)

AERODROME

YARRAWONGA AERODROME (YYWG)

PROJECT DESCRIPTION

ASPHALT OVERLAY – TWY B and
GENERAL AVIATION PARKING AREA

IMPORTANT DATES

Approval of MOWP	07 February 2023
Commencement of Works	16 February 2023
Completion of Works	17 February 2023
Expiry of MOWP	25 February 2023

CONTENTS

1. WORKS INFORMATION	2
2. RESTRICTIONS TO AIRCRAFT OPERATIONS	4
3. RESTRICTIONS ON THE WORKS CONTRACTOR.....	5
4. ADMINISTRATION	9
5. AUTHORITY	12

ANNEXES

- A. [Works Site, Access Route and Drawings](#) (inc. Section 1 – 3)
- B. [Markers](#)
- C. [Plant and Equipment details](#)
- D. [NOTAM Text](#)
- E. [Distribution List](#)

1. WORKS INFORMATION

1.1. Description of Works

The works comprise an asphalt overlay of TWY B ([Section 2](#)), including a sealed surface from holding point B to RWY 01/19 ([Section 1](#)) and sealing the General Aviation Short-Term parking area adjacent to TWY E ([Section 3](#)).

This includes the patching of existing distressed pavement areas; texturing of the existing asphalt surfaces; construction of the new asphalt surfaces; removal and reinstatement of existing line marking and runway/taxiway lighting affected by the proposed works.

All proposed works will be conducted during daylight hours (HJ):

- RWY 01/19 and TWY E will be returned to operational service on the same day.
- TWY B and the short-term parking area will be closed for two days (weather permitting).

1.2. Execution of Work

1.2.1 Sequence of Work

Stage 1 – Site Establishment and Pre-sealing Debris Removal

Day One: TWY B and the Short-Term-Parking area will be prepared by removing debris via a suction sweeper and rotary broom from the proposed sealing areas before the planned sealing works.

The anticipated time on site: is approximately three (3) hours.

Tie-down cable will be removed at the end of day one, and the Short-Term-Parking area will be closed (see NOTAM C 22/23).

Stage 2 - Sealing Works – Asphalt Overlay ([Section 1 and Section 2](#))

Day Two:

06:30 – Signage, Lighting and Marker preparation.

07:30 - Primal Surfacing crew to arrive onsite at Yarrawonga Aerodrome. Site Induction performed by Ingo Schweda, Manager - Yarrawonga Aerodrome. Movement area, entry and exit points, evacuation and assembly points outlined.

08:00 – Commencement of Sealing Works on TXY B ([Sections 1 and 2](#)).

Runway to Holding Point (Section 1) and Holding Point to end of Taxiway B (Section 2). Bitumen spraying and the associated aggregate cover will take approximately 3 hours.

Bituminous binder C170 with ten parts of crumbed rubber will be sprayed at 190 degrees Celsius. The curing of the bituminous binder begins immediately, so it is covered with Aggregates of a Class A VicRoads specification to complete the sealing of the existing pavement. Partial post-seal rolling and brooming in **Section 1** (RWY side) will commence at the aggregate cover's completion and continue for approximately 90 minutes.

Stage 3 (Section 3)

At approx. 11:00 – Commencement of Parking Area ([Section 3](#)).

Bitumen spraying and the associated aggregate cover will take approximately 2 hours. Post-seal rolling will commence after the aggregate cover and continue for approximately 3 hours. Partial brooming in **Sections 2 and 3** for the reopening process TWY E.

Stage 4 - Brooming of Sections 2 and 3

Day Three: Complete brooming of Sections 2 and 3.

Tie-down cable will be resurrected at the end of day three, and TXY B / Short-Term-Parking area will be reopened.

All Primal Surfacing Plant, Equipment and Personnel should be out of the Designated Airside Environment by **17:00**.

Stage 5 - Line marking Reinstatement (Time limited work – as soon as possible following Sealing works).

All reinstatement of required line marking does not fall within the specification of Primal Surfacing's works and will be the responsibility of Yarrawonga Aerodrome to organise.

Stage 6 – Commissioning & Handover

On completion, the Works Supervisor is to ensure the works area is made serviceable, including the removal of all FOD hazards, to the satisfaction of the WSO/Aerodrome Manager. The commissioning and handover occur on completion of Stage 4 once the Aerodrome Manager and Project Manager are satisfied.

1.2.2 Location and Duration of Work Stages

The works areas include TWY B ([Section 2](#)), including the sealed asphalt surface that extends from holding point bravo (B) to the sealed surface of RWY 01/19 ([Section 1](#)) and the General Aviation parking area ([Section 3](#)), adjacent to TWY E.

The works are illustrated in [Annex A](#).

- Day 1 - Surface preparation of the airfield is to be completed (Stage 1)
- Day 2 - Sealing works and brooming commence (Stages 2 and 3)
- Day 3 – Sealing works and brooming completed (Stage 4)
- TBA – Line marking Dates are to be advised (Stage 5)
- Day 3 – Commissioning and Handover (Stage 6)

1.2.3 Time Frame / Notification

The Yarrawonga Aerodrome Project Works are planned between:
Thursday 15th of February 2023 and conclude on Friday 17th of February 2023.
The work hours for all stages are **0730 – 1700 hours, Wednesday to Friday.**

A NOTAM will be issued at least 48 hours before work commences confirming the date and time of the proposed work.

Closed areas overnight will be lit with **red** E-Flares ([see Annex B](#)).

1.3 Drug and Alcohol Testing

No Drugs and Alcohol allowed on Site (Yarrawonga Aerodrome Airside).
CASA may undertake drug and alcohol testing without notice on anyone working airside.

1.4 No Smoking

No-smoking rule applies at all times on the airside of the Aerodrome.

2. RESTRICTIONS TO AIRCRAFT OPERATIONS

2.1. Affected Aircraft Types

The Primal Surfacing TWY/RWY works should impose minimal/limited impact upon aircraft operations. External stakeholders will be advised by email and/or verbally 14 days before the proposed works program. These include Air Ambulance/RFDS, VICPOL Air Support Branch, Aircraft Services, local Hangar owners and other flying Training Organisations.

During the proposed works period, the works area will be defined by white/red unserviceability cones and an appropriate NOTAM published (issued 48 hours before).

During the Bitumen spraying process, Work equipment with stone will be waiting on RWY 01/19 to finish the sealing process.

The RWY will be closed, as published in NOTAM C **XX/23**

2.2. Work Stages

No aircraft will be restricted during works performed under the definition of time-limited works (see MOS 139 15.3). All works will be conducted within defined hours of daylight (HJ).

Day 1 *Stage 1 – Time-limited works*

Day 2 *Stage 2-3 RWY 01/19 closed (see NOTAM C **XX/23**)*
 *TWY B closed (see NOTAM C **XX/23**)*

AD LIGHT U/S DUE WIP (see NOTAM C ~~XX~~/23)
 TWY E is partially closed (see NOTAM C ~~XX~~/23)
 Short Term Parking area closed (see NOTAM C ~~XX~~/23)
 Day 3 Stage 4 TWY B closed (see NOTAM C ~~XX~~23)
 Short Term Parking area closed (see NOTAM C ~~XX~~/23)

2.3. Declared Emergencies and Adverse Weather

During a declared emergency, access to the worksite/ Airside may be denied.

Primal Surfacing Crew and equipment will vacate the works area at the direction of the Work Safety Officer (WSO) upon the announcement via UHF Radio or verbally:

“Emergency, Emergency, Emergency, Vacate airside work area to muster point”.

The Primary Assembly Area is located in the carpark (old toilet block) next to John Duigan Drive via Access Gate ([see Annex A](#)). The estimated time to vacate personnel and equipment from the work site is 15 minutes.

Emergency procedures are documented in the Yarrawonga (YYWG) Aerodrome Manual.

Outside daylight hours, the WSO will contact the NOTAM Office and advise the status of the works area and the ability for it to be made available for declared aircraft emergencies.

2.4. NOTAMs

The Aerodrome Manager will review NOTAMs drafted by the WSO ([Annex D](#)) for each stage of the work before the WSO submission to the NOTAM Office.

The NOTAM text is to be released at least 48 hours prior to the commencement of the works.

The WSO shall carry a **hard copy of the published NOTAMs and MOWP** relevant to their area of work. Works may commence once the WSO has confirmed that the correct NOTAM is current for the planned works.

Proposed changes to the work are to be carried out in consultation with the relevant Yarrawonga Aerodrome stakeholders and Moira Shire Council. Modification to the works information must be detailed in an amendment to this MOWP and the planned NOTAM text. All changes must be reviewed and approved by the relevant authorities before the commencement of the works.

3. RESTRICTIONS ON THE WORKS CONTRACTOR

3.1. General

The WSO has absolute authority to direct the Works Contractor on airfield operational requirements. Works will be confined to the areas shown in [Annex A](#).

The Contractor is to take every precaution to prevent material spillage on or in the vicinity of aircraft movement areas or in transit to and from the work site. Any spillage that occurs is to be **immediately** removed by the Contractor to the satisfaction of the WSO.

The Contractor is to prevent material from being blown onto aircraft movement areas (Taxiway and Runways) by watering or other appropriate control measures. Spoil is not to be left for prolonged periods; at a minimum, secured in skips, trucks or removed after each day's work.

On completion of each work period when the movement area is returned to active use, the Works Supervisor is to ensure the works area is made serviceable, including removing all FOD hazards (see 3.8), to the satisfaction of the WSO. The WSO is to advise the Aerodrome Manager when the work area has been declared suitable for aircraft operations to enable an independent inspection to be conducted.

3.2. Personnel

All personnel associated with the work are bound by any instructions issued by the WSO, which has the right to refuse access to persons likely, in their opinion, to compromise aircraft safety on the airfield.

Note: The work crews are reminded Yarrowonga Aerodrome is a working airfield. Therefore, required to ensure a line of sight with each other and using hand-held UHF radios to stay in contact at all times with other crew and the supervising Work Safety Officer (WSO), (supervising from a suitable location). The UHF frequency/channel will be allocated during the initial site briefing by Ingo Schweda (Aerodrome Manager).

When personnel and equipment are required to vacate the movement area for certain operations, the requirement to do so will be clearly and precisely stated.

“All personnel and equipment will vacate manoeuvring areas” as directed by the WSO.

The WSO may grant permission to operate in the Runway Strip with men and hand tools only or other plant equipment that has been approved for the conduct of re-surfacing works.

Any breaches of aviation safety (not detected by the WSO) must be reported to the WSO. The WSO will initiate an immediate response in consultation with the relevant authorities.

The Aerodrome Manager will submit a Civil Aviation Incident Report (CAIR) if required.

3.3. Vehicles and Plant equipment

Vehicles and plants used for these works should not exceed 4.5 metres in height. All vehicles and plants are to be cleaned prior to entering the airside active areas. Vehicles and self-propelled items of plant are to have vehicle warning lights as detailed in ***CASR 1998 MOS Part 139 Section 14.05 Airside vehicle lighting requirements.***

No movement of vehicles or plants is to occur outside the works areas or access routes (Airside) without the consent of the WSO. Only vehicles and plants engaged in the work activities shall be permitted Airside.

At the end of each work period, all vehicles, plant equipment and material are to be moved clear of the works area and parked in the designated temporary parking area, shown in [Annex A](#).

Private vehicles are not allowed Airside, parking will be accommodated at a pre-arranged site with the Aerodrome Manager.

3.4. Access to the Works and Security

Access to the works area is to be via the designated route shown in [Annex A](#). Movement of vehicles, plant equipment must be confined to these routes.

Personnel are permitted to move about the designated work areas and use the designated access routes ONLY. Any person detected on site outside these areas may be evicted from the site and denied return.

All personnel must wear safety vests and PPE at all times while in the work area.

3.5. Aerodrome Markers, Markings and Lights

Aerodrome Markers, Markings and Lights are to comply with [MOS 139](#) requirements. The type and location of the Aerodrome markers, markings and lighting on the Works Site must be included in the site drawings at [Annex A](#) for review by the Aerodrome Manager.

Markings, markers and lighting are not to be installed, altered or removed without the approval of the WSO or Aerodrome Manager. The WSO is to ensure that all markers are established and removed at the start and end of each work period, as detailed in the relevant NOTAM. Further, the WSO ensures that the markers are appropriate and maintained at all times during the works until the area is returned to normal conditions.

All visual ground aids are to be protected from sprayed bitumen by appropriate covering prior to the commencement of the work, and uncovering after completion of the work.

8.108 Use of Unserviceability Markers

Unserviceability markers are shown in [Figure 8.07 \(3\) - 2](#).

[8.108 \(1\)](#) (a, b) They must consist of a white standard cone with a horizontal red stripe, 25 cm wide around its centre, halfway up the cone, so as to provide three bands of colour, white-red-white.

[8.108 \(2\)](#) Unserviceability markers must be placed at the entrance to, and across, any part of the movement area of an aerodrome (including a runway) that is not to be used by aircraft.

8.08 Works Limit Markers

[8.08 \(3\)](#) Works limit markers, must be spaced at intervals marginally less than the smallest track of the plant or vehicles operating within the work area.

3.6. Protection of Electrical Services

The procedure for ensuring that electrical services and control cables are not damaged is as follows:

- 1) The Works Contractor / Works Supervisor is to obtain dig permits before performing any excavation on any site (excluding surface milling).
- 2) The area planned for excavation is surveyed using a Ground Penetrating Radar (GPR) to identify all services in the excavation area.
- 3) The Works Contractor is then required to pothole all identified services every 5m with vacuum excavation. Note: vacuum excavation is non-destructive to in-ground services.
- 4) Following the identification of all in-ground services, the excavation proceeds with a spotter present at all times.

Before any excavation works are performed in the designated swale construction areas, Moira Shire Council Engineering Service Plans will be consulted to identify all known service locations and an underground service check to ensure no services be damaged.

The Works Contractor has to contact the Project Manager to obtain dig permits before performing any excavation on any site (excluding surface milling).

3.7. Special Requirements

The WSO is to advise the Aerodrome Manager immediately of any unserviceability to the airfield or its equipment.

Personal protective equipment (PPE), including hearing protection, must be worn at all times.

No local stakeholders will attempt to interfere with the proposed works, nor are they to broadcast from a ground-based location (on the airfield) using CTAF frequency.

The term: “**Yarrawonga Ground**” is not to be used by any local stakeholder.

3.8. Foreign Object Damage (FOD) Control

The Works Contractor (**Primal Surfacing**) is to ensure that aircraft pavements used (or crossed) during the works are kept clean and free of debris. Any debris is to be immediately removed by the Works Contractor to the satisfaction of the WSO.

All loose material and equipment must be secured against movement in strong winds or aircraft blasts. Measures shall be taken at all times to control dust or other nuisance materials, and the Works Contractor shall immediately respond to any direction by the WSO to eliminate any problem. The Works Contractor is responsible for implementing appropriate control measures.

On completion of each work period where airfield movement areas are required to be returned to active use, the Works Supervisor is to ensure the works area is made

serviceable, including the removal of all FOD hazards, to the satisfaction of the WSO/Aerodrome Manager.

4. ADMINISTRATION

4.1. Project Manager

The Project Manager is **Graham Dickie** from Moira Shire Council, details below:

Phone: 03 5871 9434

Mobile: 0439 365 220

Email: GDickie@moira.vic.gov.au

4.2. Works Contractor

The works will be carried out by **Primal Surfacing**. All contact with the Aerodrome by the Works Contractor about the work is to be made through the Project Manager.

4.3. Works Contractor - Manager

The Works Contractor will be **Primal Surfacing**. The Works Contractor Manager or representative must be on-site during all work periods.

The Works Contractor Manager is responsible, for complying with the requirements of this MOWP.

The Works Contractor Works Manager's contact details are:

Name: Shaun Robinson

Phone: 03 9369 9931

Mobile: 0419 357 809

Email: srobinson@primalsurfacing.com.au

The Works Contractor contact details are:

Organisation: Primal Surfacing

Phone: 03 9369 9931

Mobile: 0419 357 809

Email: srobinson@primalsurfacing.com.au

4.4. Works Safety Officer

As the Project involves multiple crews (in different locations around the established work site area) - where required, multiple WSOs may be on site.

The nominated Moira Shire WSOs are:

Name: Ingo Schweda (*Aerodrome Manager and Aerodrome Reporting Officer (ARO)*)
 Mobile: 0428 752 274
 Email: ischweda@moira.vic.gov.au

Name: Kate Goldsmith (*Assistant WSO and ARO*)
 Mobile: 0408 243 534
 Email: kgoldsmith@moira.vic.gov.au

Name: Clint Furmston (*Assistant WSO and ARO*)
 Mobile: 0407 838 557
 Email: CFurmston@moira.vic.gov.au

The designated and approved WSOs will not leave the work sites unattended under any circumstances (unless in the case of an emergency). Concurrent work activities by WSO personnel **are not permitted** during this works program (including operations associated with normal aerodrome activities).

The WSO is responsible for carrying out WSO duties per the requirements stipulated in [CASR MOS Part 139 Sections 13.04](#).

15.04 Management and control of aerodrome works

(3) If aerodrome works are being carried out at an aerodrome while the aerodrome is open and available for any aircraft operations, a works safety officer must be present at all times in the vicinity of the works.

The WSO must maintain radio communications on the published CTAF frequency (126.7MHz) when the aerodrome is undertaking work activities.
 The WSO must have a copy of this MOWP accessible at all times.

4.5. Aviation Safety

The WSO is responsible for Aviation Safety matters affecting the works site.

4.6. Aerodrome Manager

The Aerodrome Manager will provide Yarrawonga Aerodrome airside familiarisation and conduct a competency check of the WSO where necessary.

4.7. Contact Details

Appointment	Agency	Contact Details
Shaun Robinson	<i>Primal Surfacing</i>	PO Box 269 Newport VIC 3015
Appointment	Agency	Contact Details
Accountable Manager Graham Henderson	Moirra Shire Council	0438 828 650
Project Manager G. Dickie	Moirra Shire Council	0439 365 220
Design Consultant	Moirra Shire Council	
Contractor Works Manager	Moirra Shire Council	
WSO Ingo Schweda	Moirra Shire Council	0428 752 274
WSO Kate Goldsmith	Moirra Shire Council	0408 243 534
WSO Clint Furmston	Moirra Shire Council	0407 838 557
AD Manager Ingo Schweda	Moirra Shire Council	0428 752 274

5. AUTHORITY

5.1. Issue

This MOWP is issued in accordance with [CASR MOS Part 139](#). All works will be carried out in accordance with the MOWP.

5.2. Variation

Minor variations to this MOWP can be issued by the Project Manager after liaising with the Aerodrome Manager. However, no variation to this MOWP of a substantial nature is to be issued without the approval of the signatories. These variations will be authorised and distributed as an amendment.

Requests or proposals to amend or vary the MOWP, as well as queries on its content or meaning, are to be directed to the Aerodrome Manager.

Approval

Under the authority of the following signatures, this MOWP is approved for release.

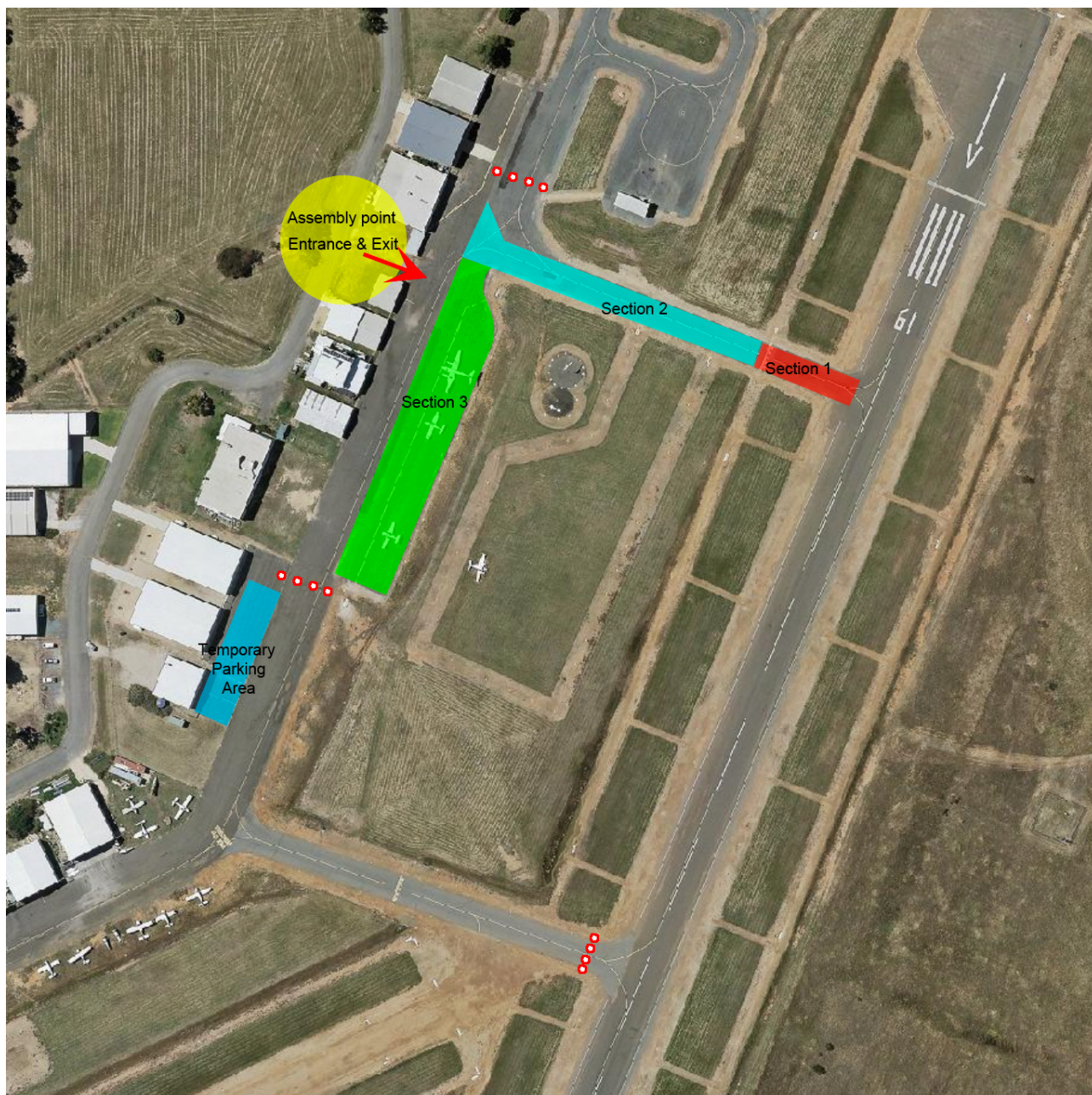
Operating Agent	Works Contractor
<i>Moira Shire Council</i>	<i>Primal Surfacing</i>
Graeme Dickie	<i>Shaun Robinson</i>
Project Manager	<i>Contracts Manager</i>
Moira Shire Council	<i>Primal Surfacing</i>
PO Box 578 Cobram VIC 3643	PO Box 269 Newport VIC 3015

Annexes:

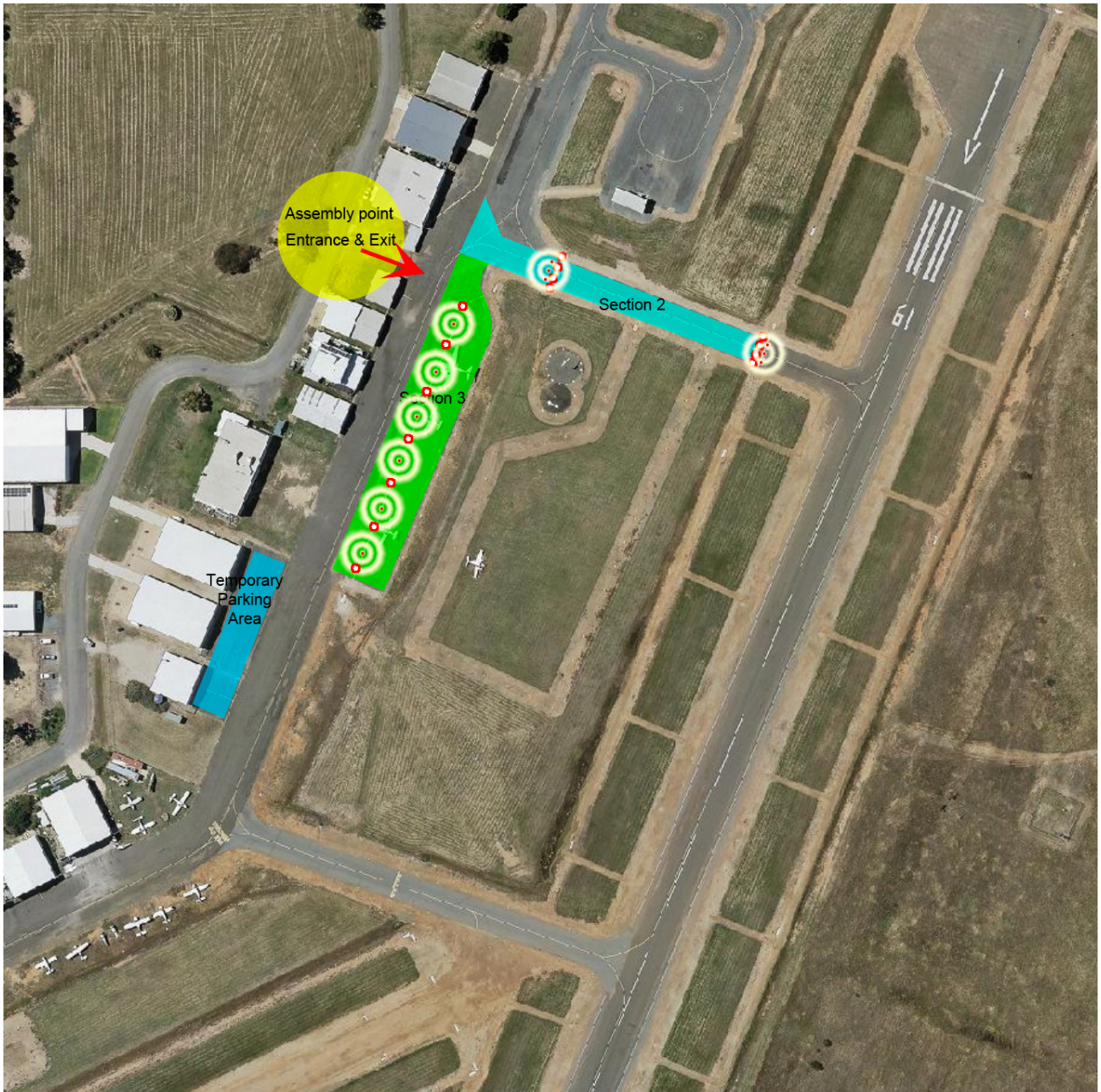
- A. [Works Site, Access Route and Drawings](#)
- B. [Markers](#)
- C. [Plant and Equipment details](#)
- D. [NOTAM Text](#)
- E. [Distribution List](#)

ANNEX A - Works Site, Access Route and Drawings

SECTIONS 1 - 3



Setup during Daylight hours (second Day)



Setup during Night hours (between the second and third Day)

ANNEX B – SECTIONS

Airside Markers



Unserviceability Marker



e Flare (Night operation)

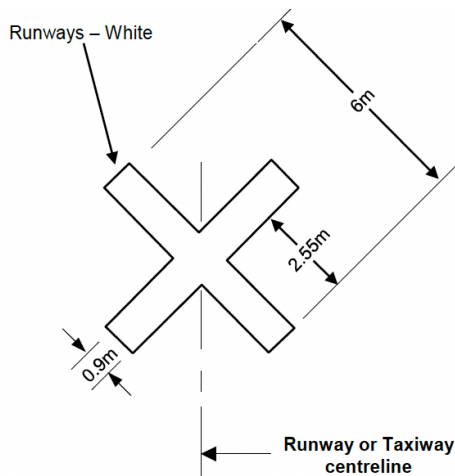


Figure 8.106 (9)-2 Unserviceability marking — temporary closures for runways of 18 m width (shows matters)

Works limit markers



Wing Tip Marker



Safety Cone

ANNEX C – Plant & Equipment Details

PLANT TECHNICAL INFORMATION

PRIMAL SURFACING PLANT & EQUIPMENT REGISTER - YARRAWONGA AERODROME											
Plant No.	Plant Item	Rego No.	Model	Year	Vin No.	Vehicle Height (approx.)	Date Registered	Registration Due Date	Date Insured	Insurance Due Date	Service Intervals
PSP05	Bitumen Sprayer	XEW636	VOLVO / SRE	2007	WDB9702772L172134	3.40m	2/02/2021	2/02/2023	31/05/2021	31/05/2022	10000 Kms & 10000 hrs
PSP08	Bitumen Sprayer	XV181X	MERCEDES / MBE	2015	WDB930242L1948278	3.40m	2/02/2021	2/02/2023	31/05/2021	31/05/2022	10000 Kms & 10000 hrs
PCT06	Tipper Truck	UUT337	MERCEDES	2007	WDB9342412L196024	3.30m	2/02/2021	2/02/2023	31/05/2021	31/05/2022	20000 Kms
PTT01	Trailer (Tag - Flat - Tri)	Q21104	Beavertail	2008	6D9FTTAG3MU26435	3.00m	2/02/2021	2/02/2023	31/05/2021	31/05/2022	20000 Kms
PCT19	Tipper Truck	XV14UF	Volvo / Trout River	2021	VV5XG20G5MD212189	3.30m	2/02/2021	2/02/2023	31/05/2021	31/05/2022	20000 Kms
PTT13	Trailer (Tag - Flat - TWIN)	VV91HV	UPT (Trailer)	2010	6K9ULPTG2LG090020	3.25m	2/02/2021	2/02/2023	31/05/2021	31/05/2022	20000 Kms
PCT18	Tipper Truck	XV44HU	Volvo / Trout River	2019	VV5XG30G3ID207591	3.30m	2/02/2021	2/02/2023	31/05/2021	31/05/2022	20000 Kms
PTT02	Trailer (Tag - Flat - TWIN)	Q88308		2005	6D9FTTAG5MU26550	3.00m	2/02/2021	2/02/2023	31/05/2021	31/05/2022	20000 Kms
PCT17	Tipper Truck	XV61HU	Volvo / Trout River	2019	VV5XG20D1JD208268	3.30m	2/02/2021	2/02/2023	31/05/2021	31/05/2022	20000 Kms
PCT10	Tipper Truck	XEW674	Volvo	2009	VV5FY0D59D131914	3.30m	2/02/2021	2/02/2023	31/05/2021	31/05/2022	20000 Kms
PST12	Small Truck	1NT7ZR	Hino 500 FD	2018	JHDFD7JIMXXX10694	3.10m	2/02/2021	2/02/2023	31/05/2021	31/05/2022	20000 Kms
PBR05	Broom (Towed)	R60744	HARDIMAN	2005	6T9T26V974001X021	1.95m	2/02/2021	2/02/2023	31/05/2021	31/05/2022	250 Hours
PST14	Small Truck	1NT7ZU	Hino 500 FD	2018	JHDFD7JIMXXX10716	3.10m	2/02/2021	2/02/2023	31/05/2021	31/05/2022	20000 Kms
PBR06	Broom (Towed)	R60745	HARDIMAN	2005	6T9T27V97404CP002	1.95m	2/02/2021	2/02/2023	31/05/2021	31/05/2022	250 Hours
PST08	Small Truck	XEW568	Hino 500	2009	JHDFD8JIMXXX10259	3.10m	2/02/2021	2/02/2023	31/05/2021	31/05/2022	20000 Kms
PAT13	Trailer (Paper)	R95766	SGS Tipping Trailer	2010	6T9T20V97903Y2002	2.70m	2/02/2021	2/02/2023	31/05/2021	31/05/2022	Six months
PMR09	Roller (Multi)	ZFK974	Caterpillar PS 150C	2013	CATPS150LFP501377	3.00m	2/02/2021	2/02/2023	31/05/2021	31/05/2022	250 Hours
PMR11	Roller (Multi)	XV21KS	Caterpillar PS 150C	2014	CATPS150TFPS01398	3.00m	2/02/2021	2/02/2023	31/05/2021	31/05/2022	250 Hours

ANNEX D - NOTAMS Text

NOTAM ONE	UTC/Zulu	
A) Location	YYWG	
B) Start	23 02 15	1930 h
C) Finish	23 02 16	0600 h
D) Periods of Activity		
E) NOTAM Text	RWY 01/19 CLOSED DUE WIP	
F) Lower Limit (optional)		
G) Higher Limit (optional)		

NOTAM ONE	UTC/Zulu	
A) Location	YYWG	
B) Start	23 02 14	2100 h
C) Finish	23 02 17	0600 h
D) Periods of Activity		
E) NOTAM Text	SHORT-TERM PARKING AREA CLOSED. CTC AD REP OFFICER ON TEL: 0428 752 274.	
F) Lower Limit (optional)		
G) Higher Limit (optional)		

NOTAM ONE	UTC/Zulu	
A) Location	YYWG	
B) Start	23 02 15	1900 h
C) Finish	23 02 16	0600 h
D) Periods of Activity		
E) NOTAM Text	FUEL FACILITY NOT AVBL VIA TWY B AND TWY E	
F) Lower Limit (optional)		
G) Higher Limit (optional)		

NOTAM ONE	UTC/Zulu	
A) Location	YYWG	
B) Start	23 02 15	1900 h
C) Finish	23 02 17	0600 h
D) Periods of Activity		
E) NOTAM Text	TWY B CLOSED	
F) Lower Limit (optional)		
G) Higher Limit (optional)		

NOTAM ONE	UTC/Zulu	
A) Location	YYWG	
B) Start	23 02 15	1900 h
C) Finish	23 02 16	0600 h
D) Periods of Activity		
E) NOTAM Text	NORTHERN HALF OF TWY E CLOSED	
F) Lower Limit (optional)		
G) Higher Limit (optional)		

NOTAM ONE	UTC/Zulu	
A) Location	YYWG	
B) Start	23 02 15	1900 h
C) Finish	23 02 16	0600 h
D) Periods of Activity		
E) NOTAM Text	AD LGT U/S DUE WIP	
F) Lower Limit (optional)		
G) Higher Limit (optional)		

ANNEX E - DISTRIBUTION LIST

Yarrawonga Aerodrome Asphalt Overlay – TWY B and General Aviation Parking Area MOWP 2023

MOIRA SHIRE COUNCIL

ACCOUNTABLE MANAGER
 AERODROME MANAGER
 MOIRA SHIRE COUNCIL ENGINEER
 PROJECT MANAGER
 DESIGN CONSULTANT

GRAHAM HENDERSON
 INGO SCHWEDA

GRAEME DICKIE

WORKS SAFETY OFFICER

INGO SCHWEDA
 KATE GOLDSMITH
 CLINT FURMSTON

CONTRACTOR

WORKS CONTRACTOR

SHAUN ROBINSON

EMERGENCY SERVICES

AIR AMBULANCE
 AIR POL
 FIRE STATION MANAGER
 PARAMEDIC
 SES

ESSENDON
 ESSENDON
 YARRAWONGA
 YARRAWONGA
 YARRAWONGA