

# A NEW VISION FOR THE YARRAWONGA FORESHORE



Almost two years ago the Yarrowonga community told us they wanted the new Yarrowonga-Mulwala bridge to be located alongside the existing weir bridge.

We are taking the community's direction a stage further and launching concept designs that show what could be achieved.

A magnificent foreshore destination that will build investor confidence and take Yarrowonga to the next level as Victoria's best waterfront destination.

**Moira Shire Council  
is excited to launch  
a bold new vision  
for the Yarrowonga  
foreshore.**



**THE JEWEL IN YARRAWONGA'S CROWN AND VICTORIA'S  
BEST WATERFRONT DESTINATION**

## EXTEND

... Yarrowonga onto the lake with a visitor and interpretive centre and café dining that can be accessed from land and water.



## LINK

... the current disjointed green spaces along the foreshore into a magnificent public space that can host large markets and events and still provide beautiful spaces for picnics and casual gatherings and activities.



# THE JEWEL IN YARRAWONGA'S CROWN



*"With this bold transformation we can replace cars and trucks at the lake end of Belmore Street with a magnificent foreshore destination that showcases everything Yarrowonga has to offer. This is a concept for the future which connects Yarrowonga's main street to Lake Mulwala, something that every tourism and lifestyle town would want."*

**Mayor Libro Mustica**

## CONNECT

... Yarrowonga, Mulwala and the many points of interest around the lake with a network of water taxis and walking/cycling paths.

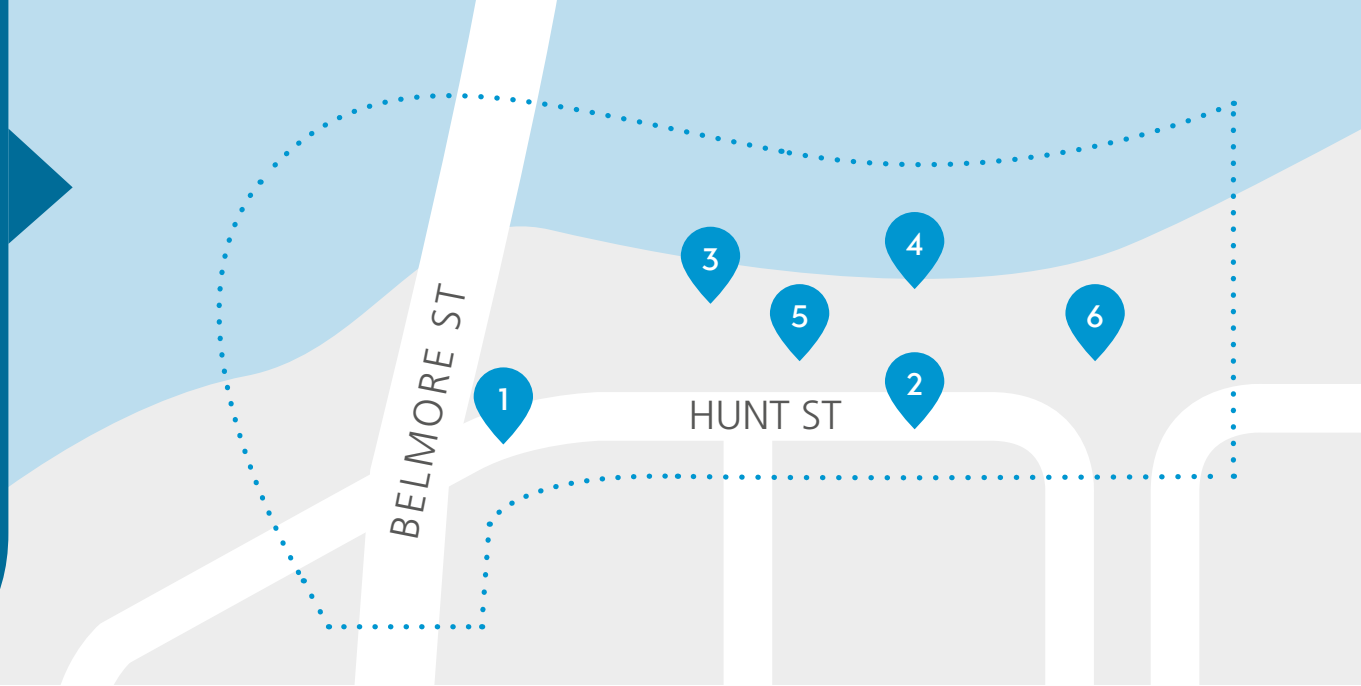


## CELEBRATE

... the existing bridge's history with replica sections incorporated into the foreshore design and through interpretive material.



Our concepts are inspired by **current** and **possible** public use of the foreshore – creating a space for all ages, interests and abilities to enjoy our beautiful lake.



Access to the Foreshore and VIC is convoluted and uninviting.



There is a great opportunity to convert the section of Hunt St between Belmore and Hume St into park.



The current pathway is cluttered.



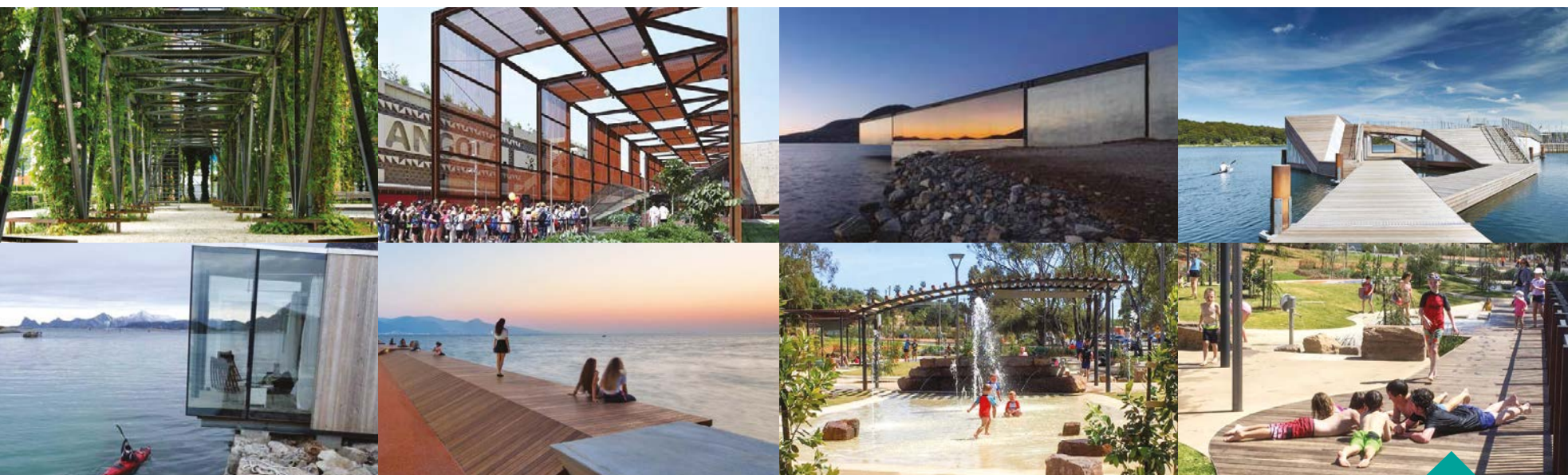
The path at the lake's edge is narrow and offers little opportunity for engagement with the water.



We noticed people bringing their own chairs under the trees, of which there are few.



Play equipment is outdated and offers little imaginative and nature-based play opportunities.



We have launched these concepts because we want to show the community how Belmore Street can connect to the lake and be transformed into a pedestrian-friendly, community and tourism precinct to help ensure Yarrowonga's continued success as a premier tourism destination in Victoria.

**OTHER  
PLACES  
AND  
IDEAS**